

# **Supporting Rural Entrepreneurs: Lessons from Appalachia and Beyond**

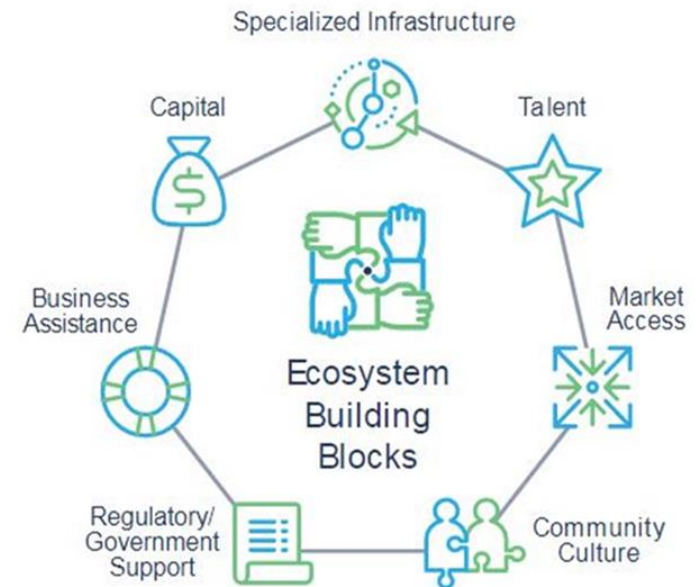
**Panelists: Erik R. Pages, EntreWorks Consulting  
Enoch Elwell, CO.STARTERS**

**Janyce Fadden, University of North Alabama  
Kostas Skordas, Appalachian Regional Commission**

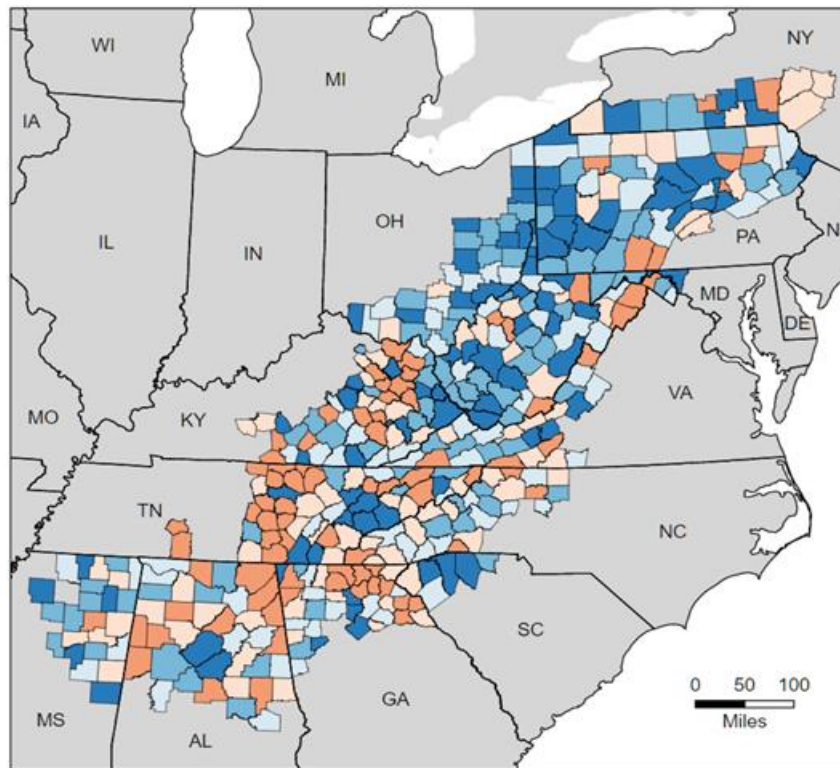
**IEDC Annual Conference  
October 2018**

# Appalachian Regional Commission Ecosystems Mapping Project Summary

- Ran from Oct. 2016 to March 2018
- Key Deliverables
  - Literature Review
  - Case Studies (8 Regions)
  - Program Inventory
  - Data Dashboard
  - Policy Recommendations

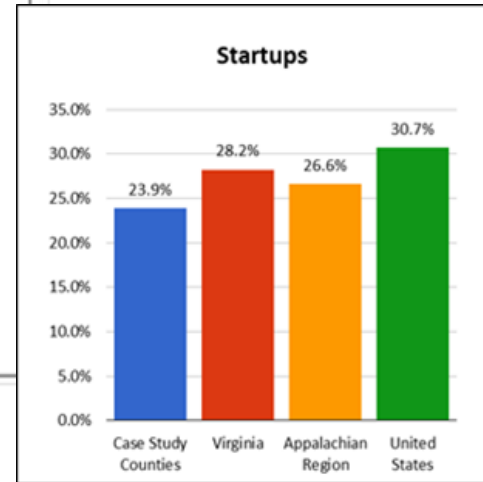
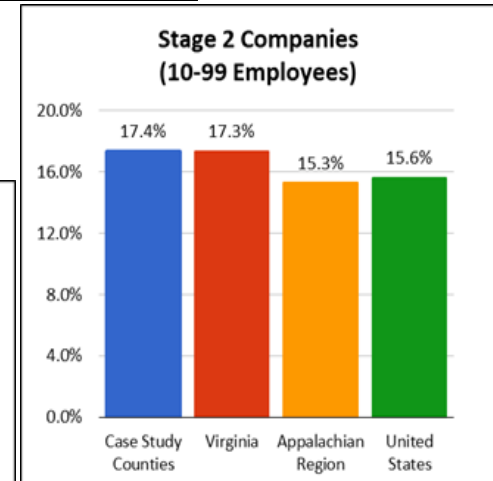
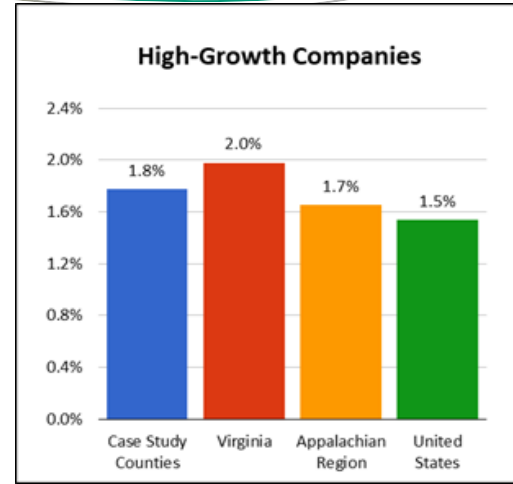
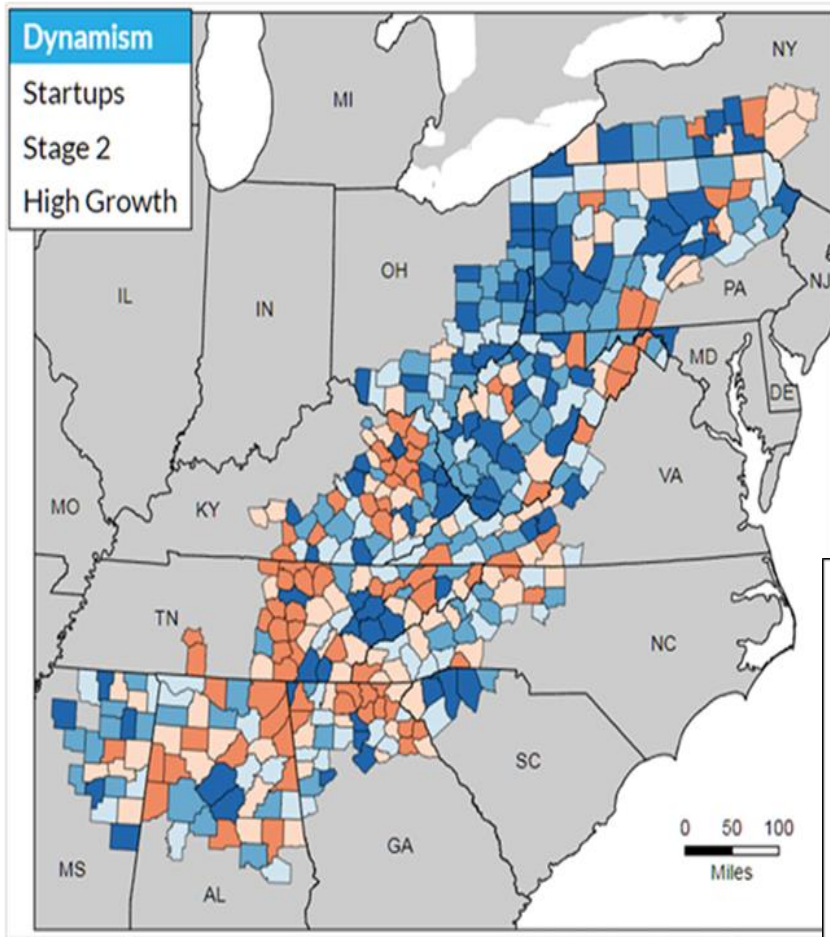


# Data Dashboard



A simplified summary of entrepreneurial dynamism that allows communities to benchmark their progress with other counties.

Figure 1: Entrepreneurial Dynamism in Appalachia





Welcome to **Entrepreneurial Ecosystems in Appalachia**.

An "**entrepreneurial ecosystem**" is a network of entrepreneurs and the service providers that support them. By creating a supportive environment for entrepreneurs, communities can spur local and regional economic development. Entrepreneurial ecosystems are important to Appalachia because they can help the region diversify its economy, create jobs, and increase the flow of capital, finance, goods, and services into communities.

This website is a resource for information on entrepreneurial ecosystems throughout Appalachia, which encompasses 420 counties across 13 states. It serves as a resource for data and programs related to entrepreneurship in Appalachia. Through this online platform, you will be able to gauge entrepreneurial performance in a given Appalachian county compared to its home state, the Appalachian counties within that state, the whole Appalachian region, and the United States.

**359,749**  
new  
companies

**41,653**  
high-growth  
firms

**206,412**  
stable small  
businesses

**1,022**  
entrepreneurial  
support  
organizations

Use the buttons below to learn more about the **Appalachian Entrepreneurial Dynamism Dashboard** and **Appalachian Entrepreneurial Resources Inventory**.

[Dashboard](#)

[Inventory](#)

# Questions?

Erik R. Pages

EntreWorks Consulting

[epages@entreworks.net](mailto:epages@entreworks.net)

703-237-2506

[www.entreworks.net](http://www.entreworks.net)

BLOG: [www.entreworks.net/blog](http://www.entreworks.net/blog)

Newsletter Sign-Up:

<http://www.entreworks.net/Newsletter.php>

**ENTREWORKS**  
CONSULTING