



There is no box

Ignite IEDC | October 16 2019



INTERNATIONAL
ECONOMIC DEVELOPMENT
COUNCIL

#IEDC #IEDCAnnual

CEO MESSAGE

- Walt Disney... “Don’t think outside the box. Once you say that, you’ve established there is a box.”
- Craig Groeschel... “think inside the box” to create constraints that eliminate options and promote creativity.
- Alan Tio... these “boxy” words of encouragement demonstrate how we can think about problems to solve and what we need to do to be successful.



INTERNATIONAL
ECONOMIC DEVELOPMENT
COUNCIL

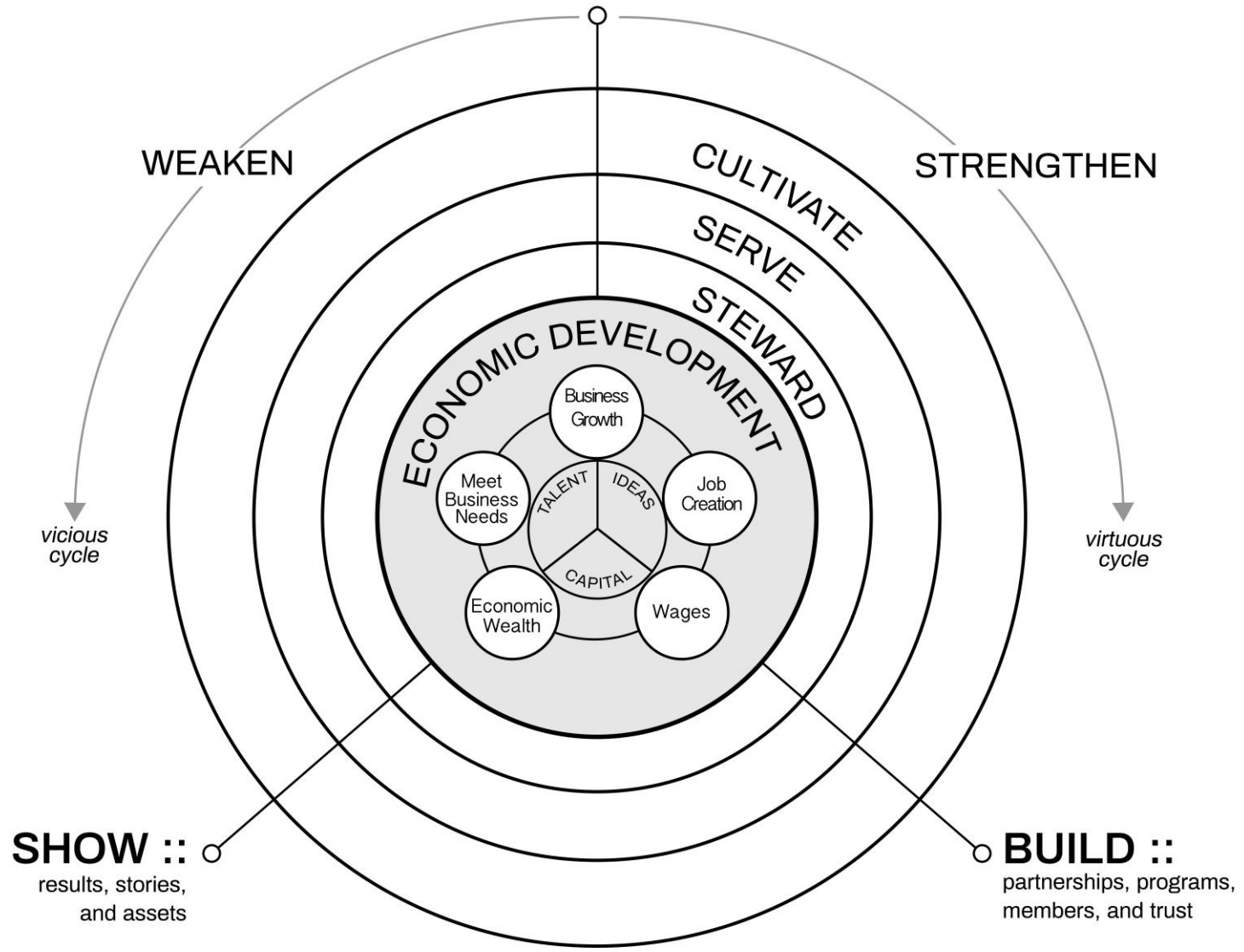
#IEDC #IEDCAnnual

NEW MISSION

*CONVENE
BUILD
SHOW*

the community's economic
growth resources

CONVENE :: people, needs, and places



KEDCO BUSINESS MODEL

OLD CW: we react + NEW CW: we bring
we respond = someone people together + we
else defines the find the problems = we
problems develop solutions
together

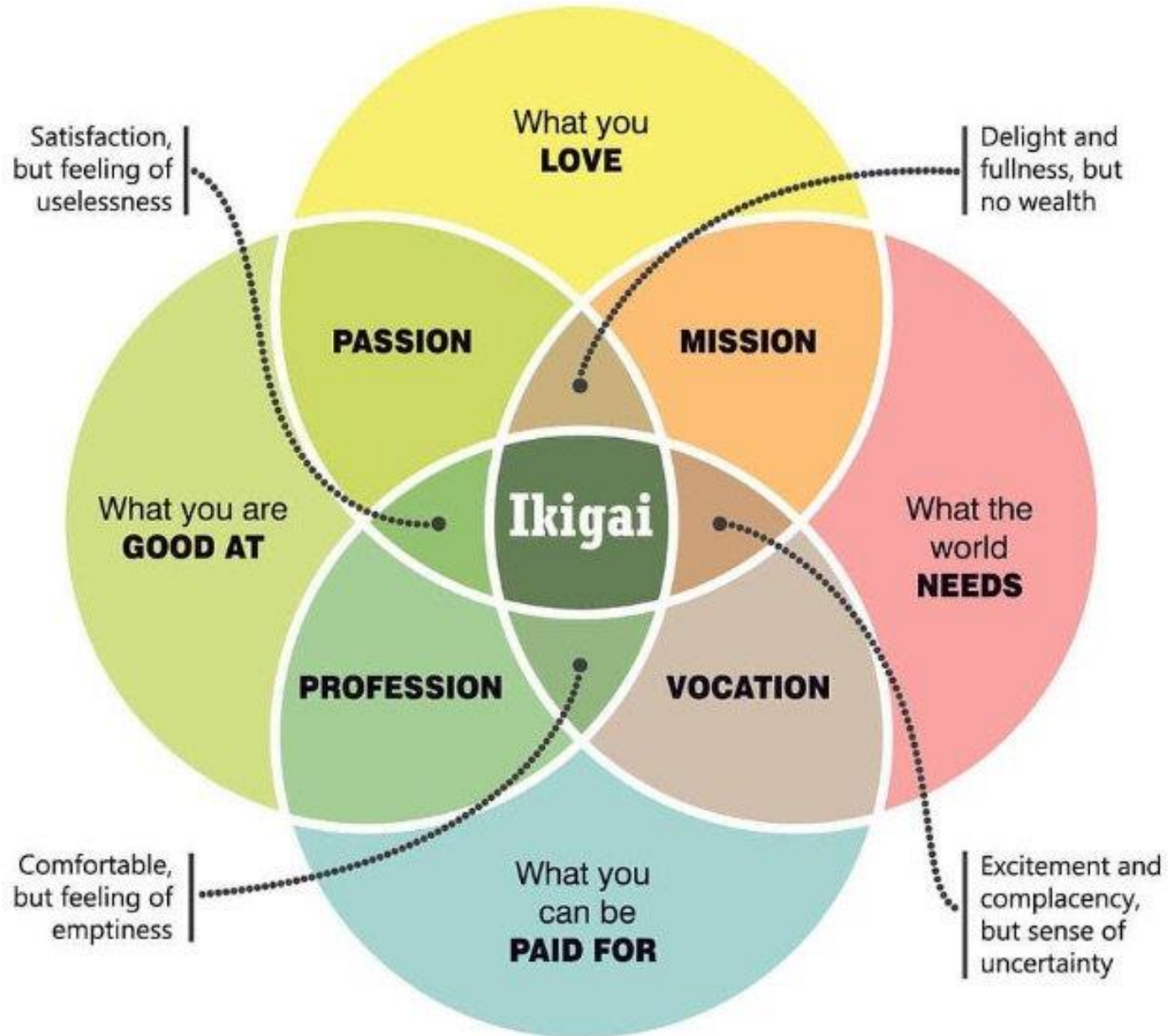


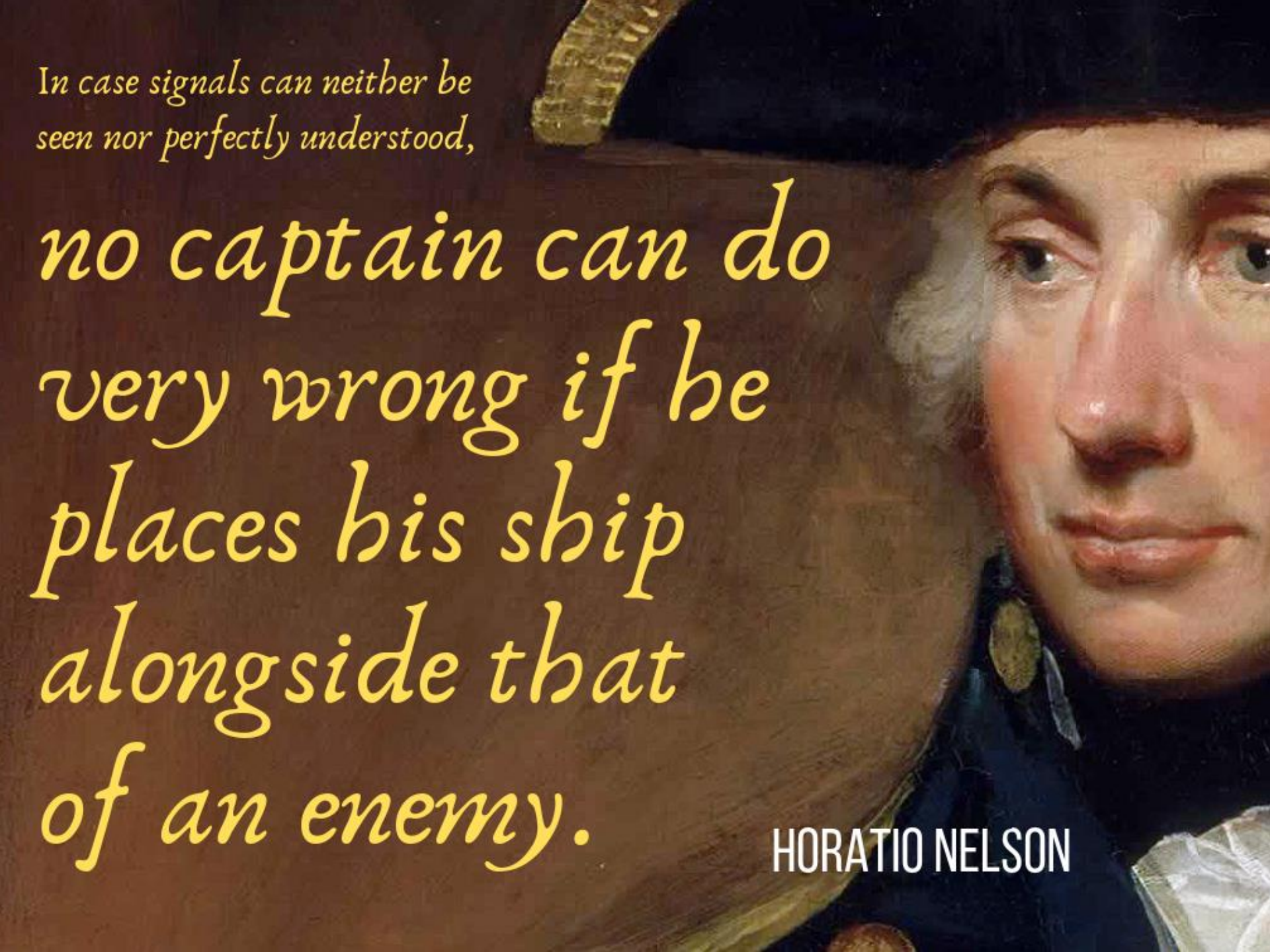
INTERNATIONAL
ECONOMIC DEVELOPMENT
COUNCIL

#IEDC #IEDCAnnual

Ikigai

A JAPANESE CONCEPT MEANING "A REASON FOR BEING"



A close-up portrait of Horatio Nelson, a British naval officer, wearing a dark blue military uniform and a black bicorne hat. He has a serious expression and is looking slightly to the right. The background is a dark, textured surface, possibly a ship's interior.

*In case signals can neither be
seen nor perfectly understood,*

*no captain can do
very wrong if he
places his ship
alongside that
of an enemy.*

HORATIO NELSON

STAY IN MOTION

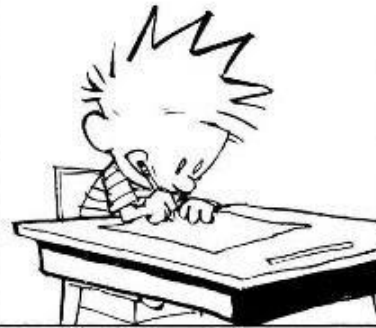
1. Explain Newton's First Law of Motion in your own words.



!



Yakka Foob Mog. GRUG
Pubbawup Zink wattooM
Gazork. CHUMBLE Spuzz.



I LOVE
LOOPHOLES.

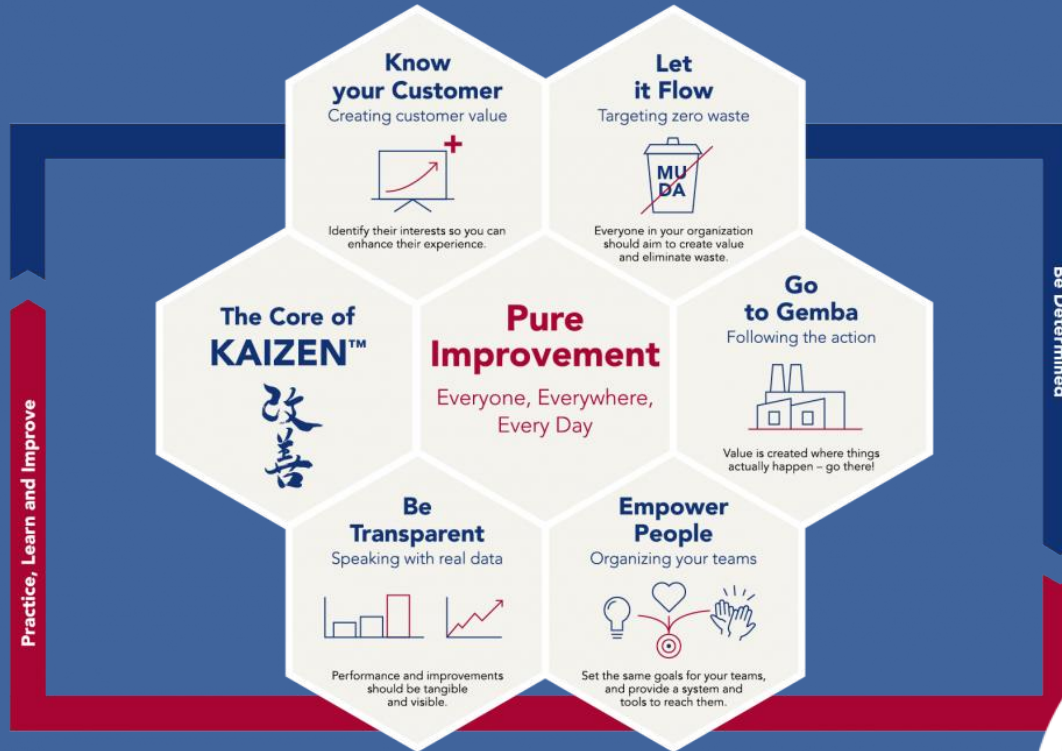


INTERNATIONAL
ECONOMIC DEVELOPMENT
COUNCIL

#IEDC #IEDCAnnual



ALWAYS GET BETTER



INTERNATIONAL
ECONOMIC DEVELOPMENT
COUNCIL

#IEDC #IEDCAnnual

A background image of a sunset over the ocean. The sun is a bright, glowing orb in the upper right quadrant, casting a warm, golden light across the sky. The sky transitions from a pale yellow near the sun to a soft orange and then a muted blue towards the horizon. The foreground shows the dark, textured surface of the ocean with gentle waves rolling in.

THANK YOU

Alan Tio, MPA, CEcD | CEO

Kosciusko EDC

atio@kosciuskoedc.com | 574-221-0367