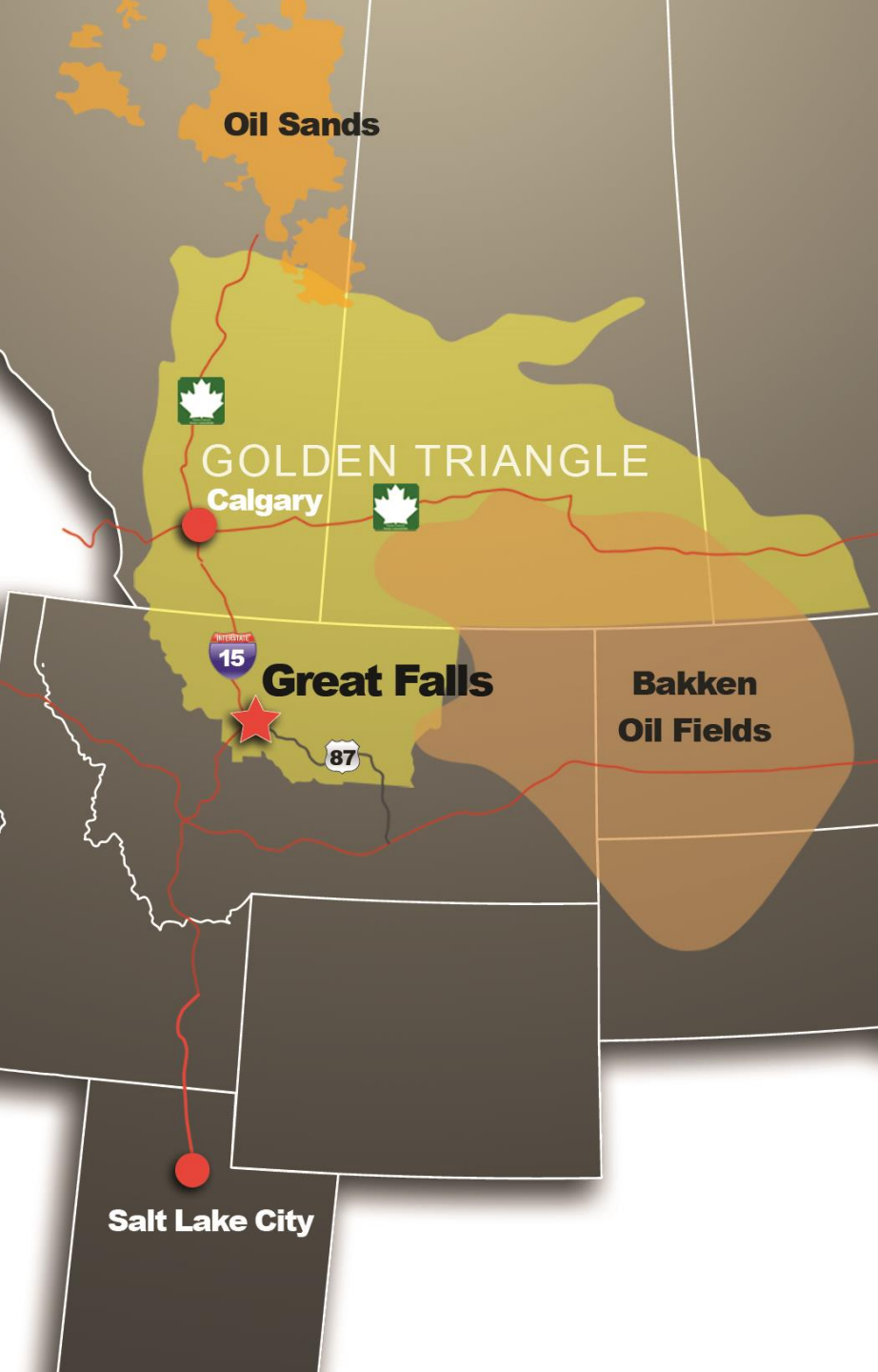




Great Falls, Montana
Development Authority

*First internationally accredited
economic development organization in
the Rocky Mountain West!*





Great Falls, Montana

44,000 square mile trade area

Large job loss in late 1970's

No job growth in 1980's/90's



PERSPECTIVE MAP OF

GREAT FALLS, MONT.

1891.

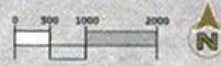
Small text block in the bottom left corner, likely a legend or descriptive text.

Small text block in the bottom right corner, likely a legend or descriptive text.

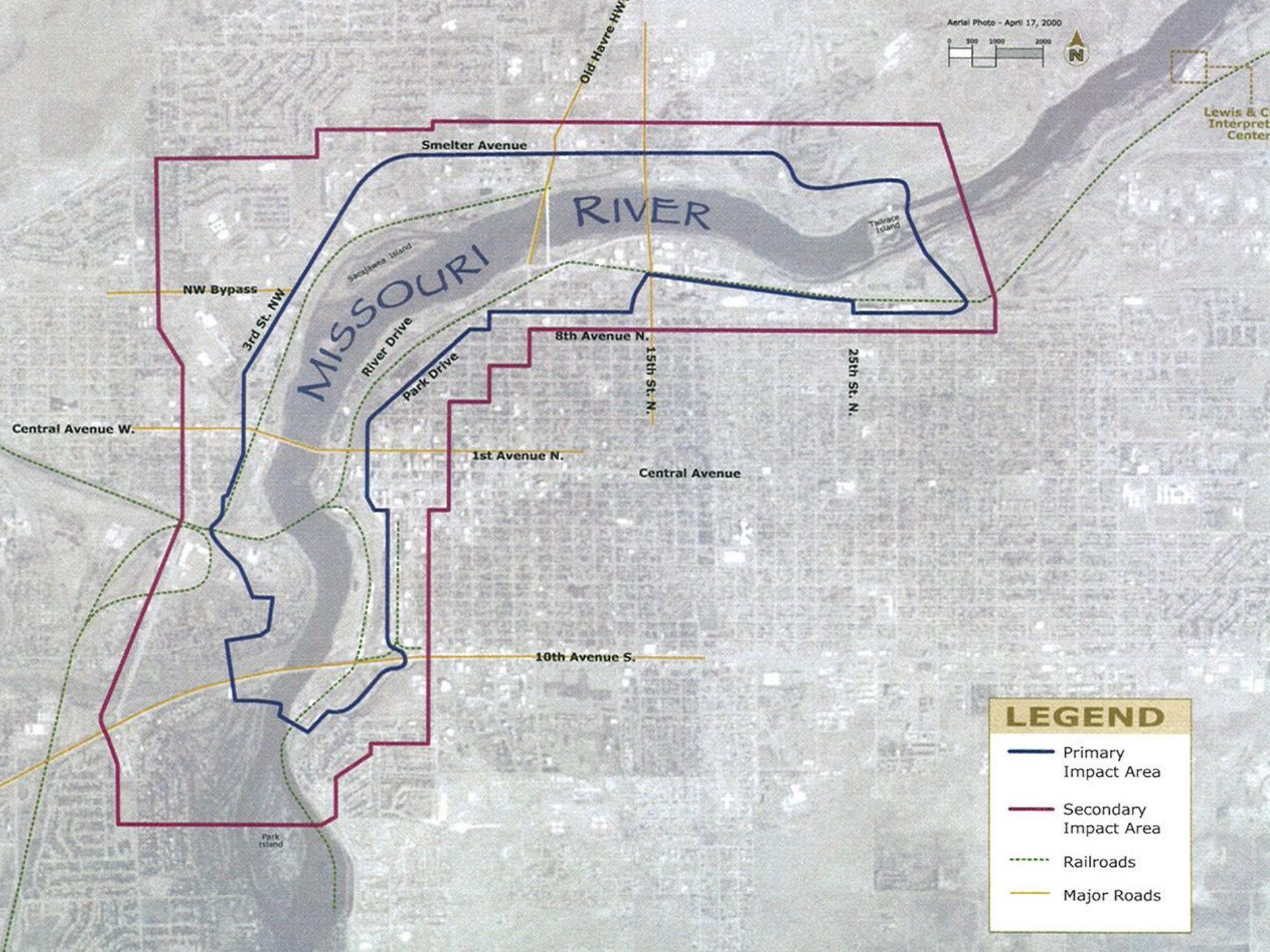








Lewis & C
Interpret
Center



LEGEND

- Primary Impact Area
- Secondary Impact Area
- - - Railroads
- Major Roads



CENTRAL AVE W

3RD ST NW

14TH AVE NW

1ST AVE N

MISSOURI RIVER





STAYBRIDGE
SUITES

Handicapped
Parking

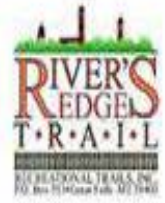
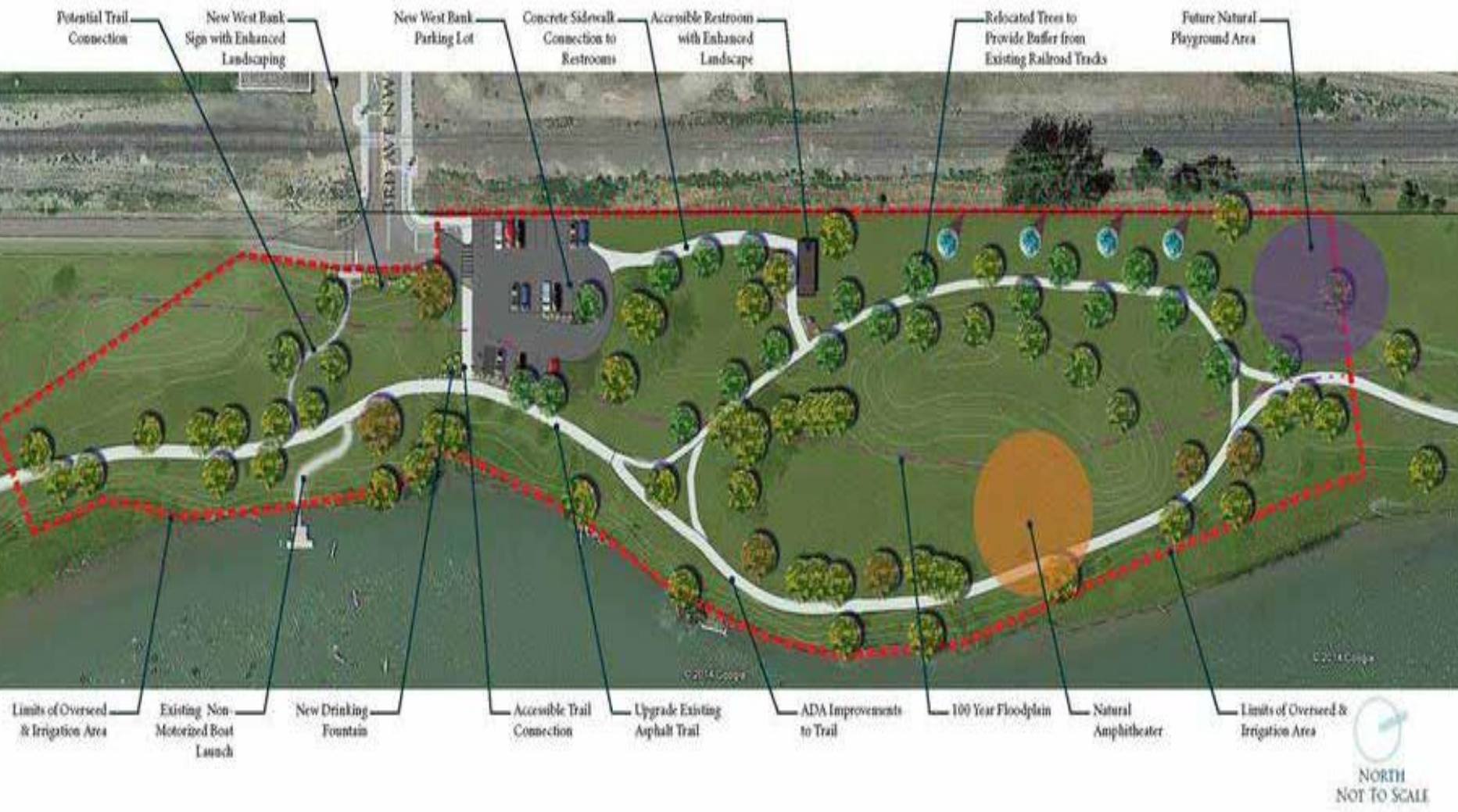


THE FRONT PUBLIC HOUSE

HOTEL BARNETT
EST. 1888







WEST BANK PARK LANDSCAPE CONCEPT

DECEMBER, 2014





WEST BANK LANDING

STAY | LIVE | WORK | PLAY

Residential Condos

FUTURE PHASE
60,000 sf Residential
Esd. Completion : 2020

Mixed Use 4

FUTURE PHASE
14,000 sf Retail
28,000 sf Office
20,000 sf Residential
Esd. Construction : 2021

Spring Hill Suites by Marriott

Phase 1
132 Rooms
4 Conference Rooms
Opening Early 2018

Mixed Use 3

Phase 3
16,000 sf Retail
33,800 sf Office
16,000 sf Residential
Construction : 2019

Specialty Market

Phase 2B
20,000 sf Retail
Opening Late 2018

QSR Building

Phase 2
Quick Service Restaurant
3,200 sf
Opening Mid 2018

Mixed Use 1

Phase 2
15,250 sf Retail
20,800 sf Office
Construction 2019

Existing Barrel Building

The Peak Fitness Center
Phase 2
16,000 sf
Opening Early 2018

Mixed Use 2

Phase 2
14,600 sf Retail
24,000 sf Office
Opening Mid 2018















































GFDA Lending Track Record

- » Money Lent \$47,659,424 16%
- » Capital Leveraged \$247,790,613 84%
- » Total Investment \$295,450,037

- » Loans from \$9,000 to a \$2,225,810 package

- » Cumulative Principal Write-offs \$455,528 1.4%
 - *Still actively recovering some of these funds*

