

LOUISIANA'S EVOLVING ECONOMY

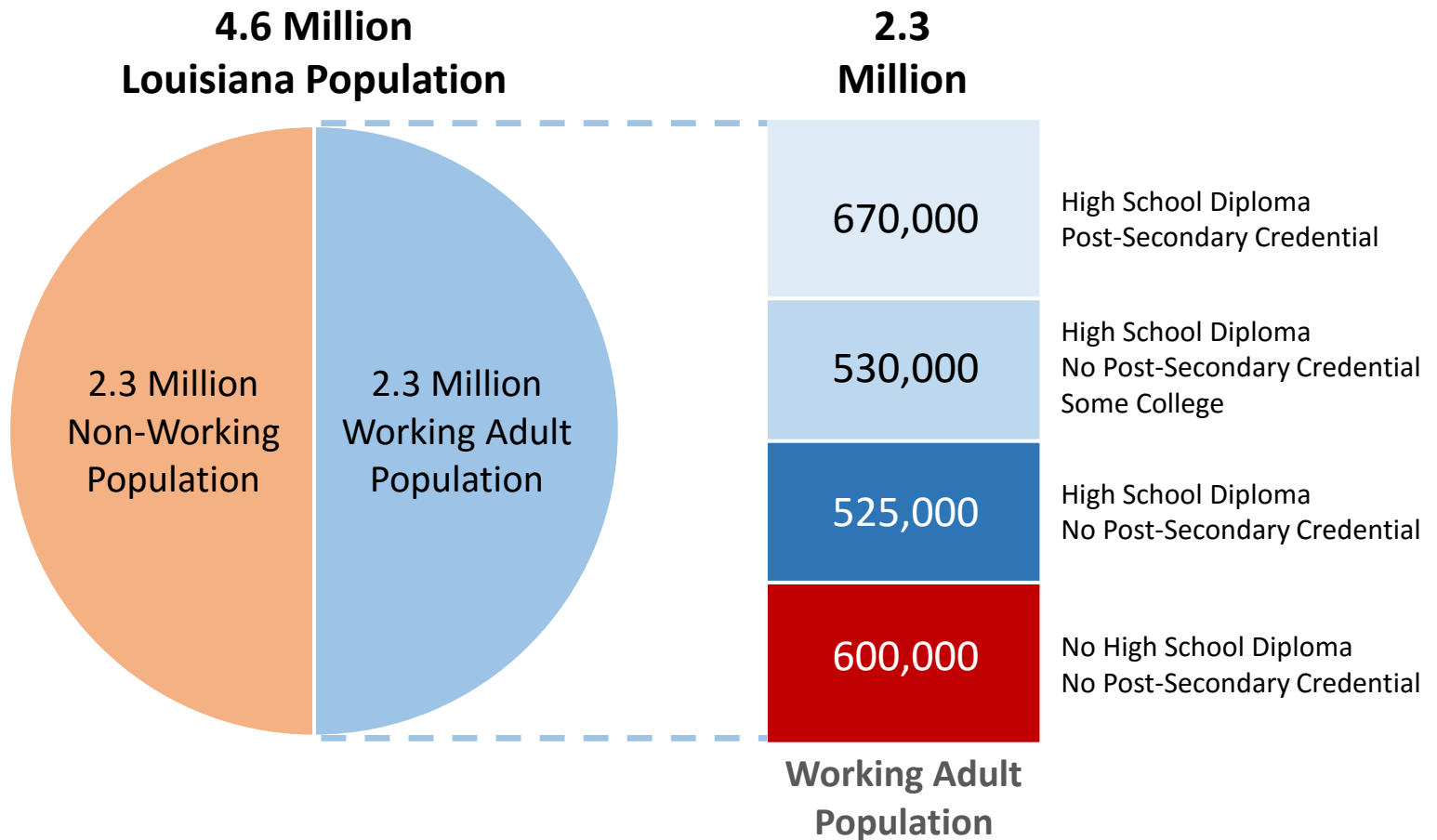
Monty Sullivan

Sunday, January 24, 2016

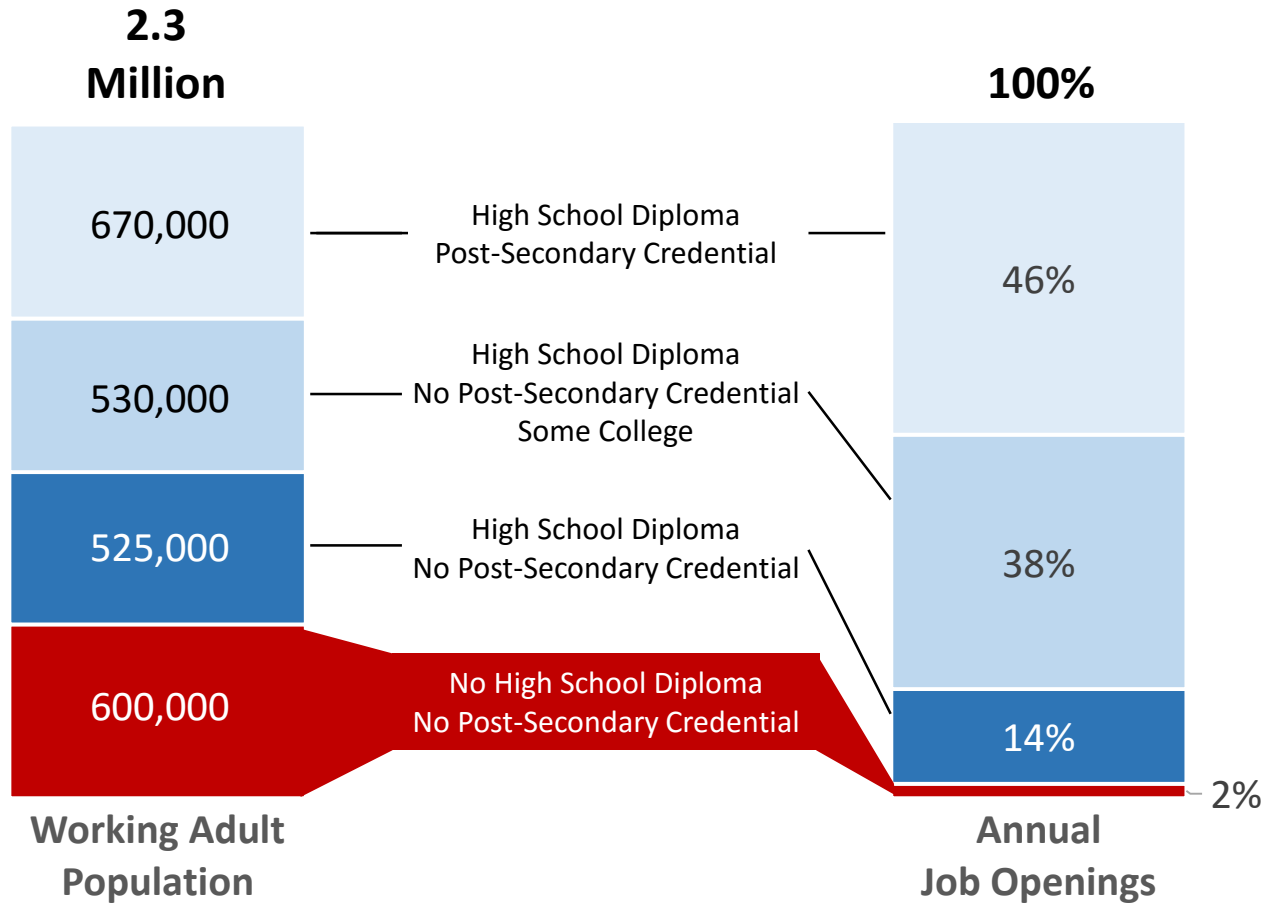
COMMUNITY & TECHNICAL COLLEGES



LOUISIANA'S WORKFORCE POPULATION



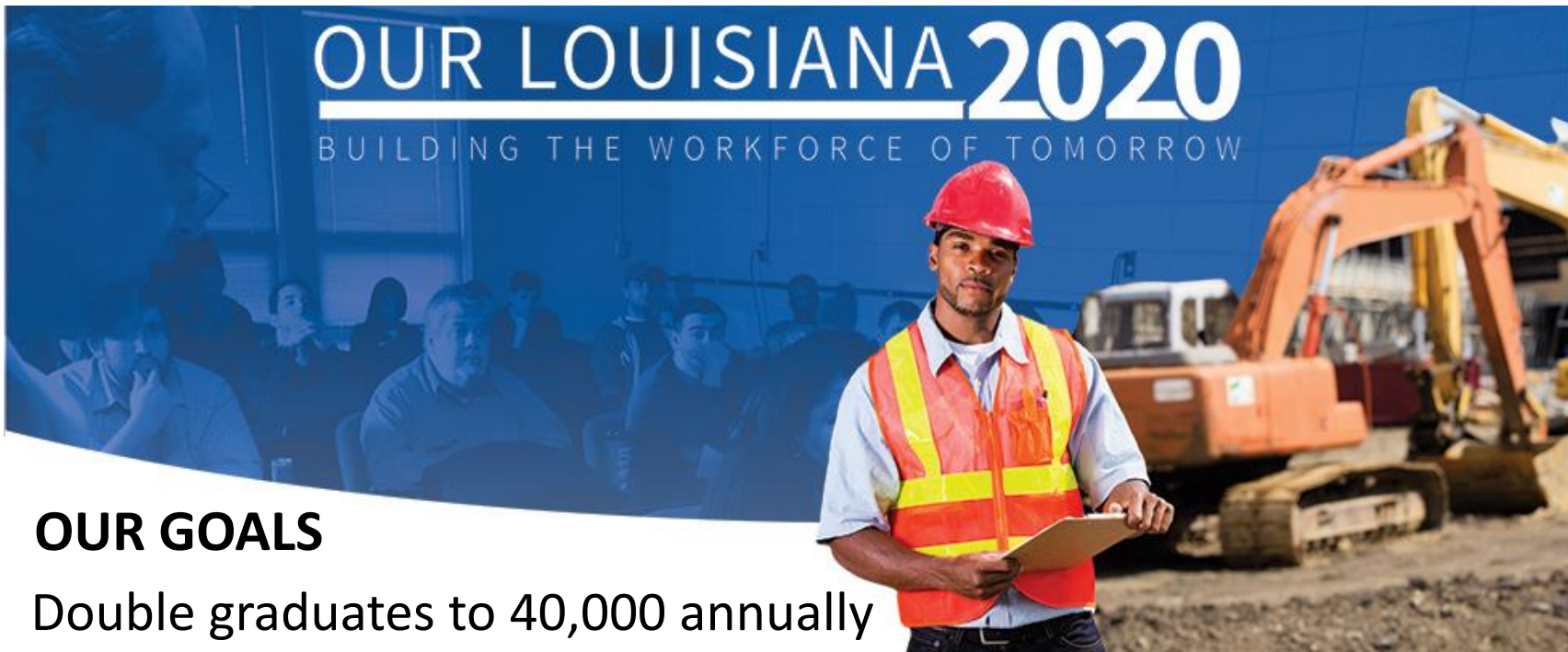
EDUCATIONAL ALIGNMENT TO HIGH DEMAND JOB OPENINGS



Source: LWC Long-term Occupational Forecasts

OUR LOUISIANA 2020

BUILDING THE WORKFORCE OF TOMORROW



OUR GOALS

- Double graduates to 40,000 annually
- Double earnings of an annual graduating class to \$1.5 Billion
- Quadruple student transfers to universities to 10,000 annually
- Double students served to 325,000 annually
- Quadruple partnerships with businesses to 1,000 annually
- Double foundation assets to \$50 million



**CYBER
INNOVATION
CENTER**



**INTEGRATED
PRODUCTION
TECHNOLOGY
CENTER**



**REGIONAL
TRAINING
FACILITY**

