



# IEDC LEADERSHIP ROUND TABLE

## FT. LAUDERDALE



JON ROBERTS

JANUARY 26, 2019



DISRUPTION.  
CREATIVE OR  
DESTRUCTIVE?



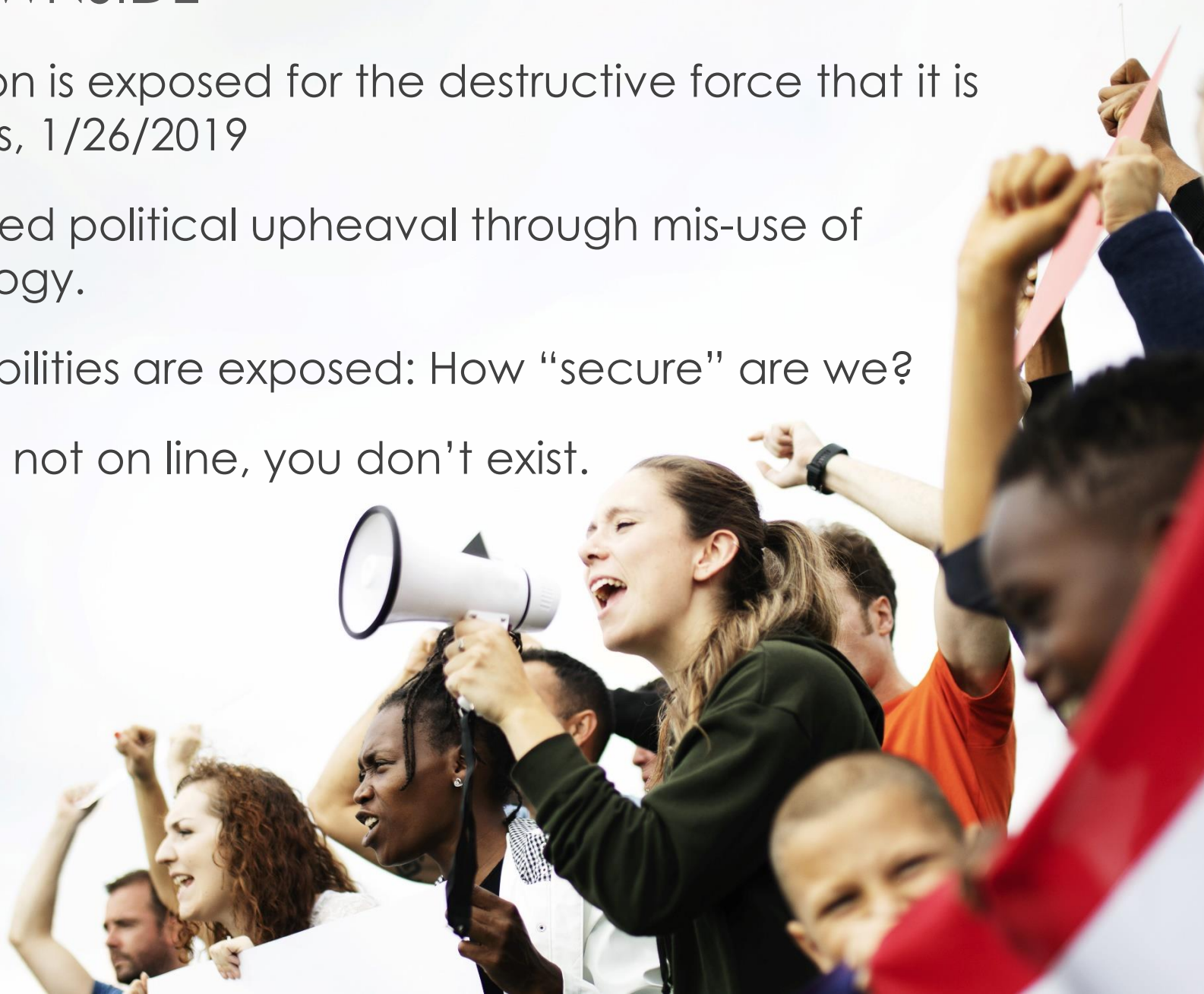
# THE UPSIDE

- Cloud computing gives way to edge computing.
- 5G enables new platforms.
- IOT becomes real.
- VR and AR take giant leaps forward.
- Personal robotics become soft.



# THE DOWNSIDE

- Disruption is exposed for the destructive force that it is  
NY Times, 1/26/2019
- Continued political upheaval through mis-use of technology.
- Vulnerabilities are exposed: How “secure” are we?
- If you're not on line, you don't exist.













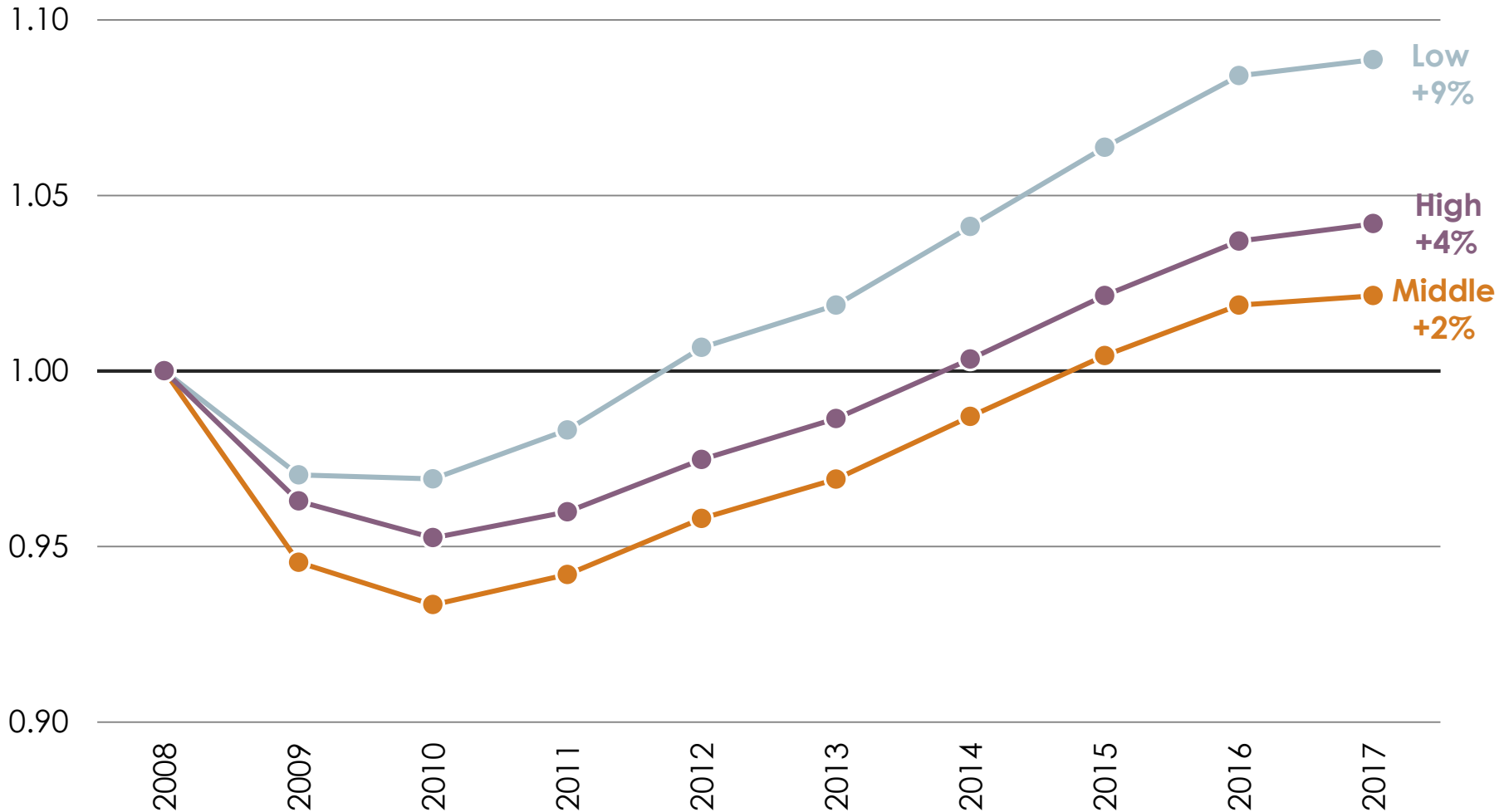


Job shifts further  
erode the middle  
class.

# THE HOLLOWING OUT OF THE MIDDLE

## JOB GROWTH BY WAGE LEVEL

2008 to 2017, indexed to 2008

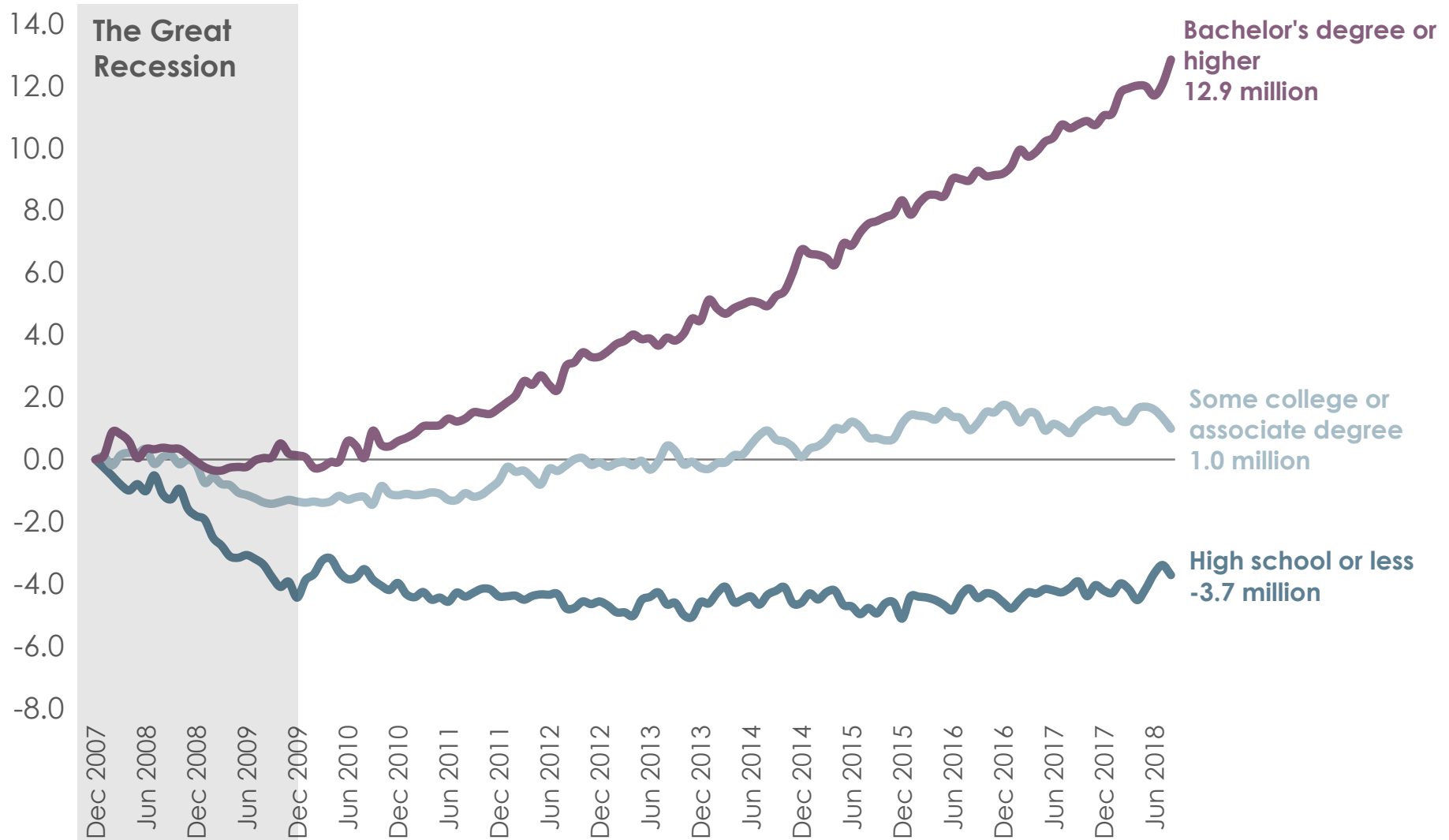


Sources: EMSI 2017.4 Complete Employment.

Note: Low wage jobs pay less than \$13.84; middle wage jobs pay between \$13.84 and \$21.13; high wage jobs pay more than \$21.14.



# RECOVERY BY EDUCATIONAL ATTAINMENT



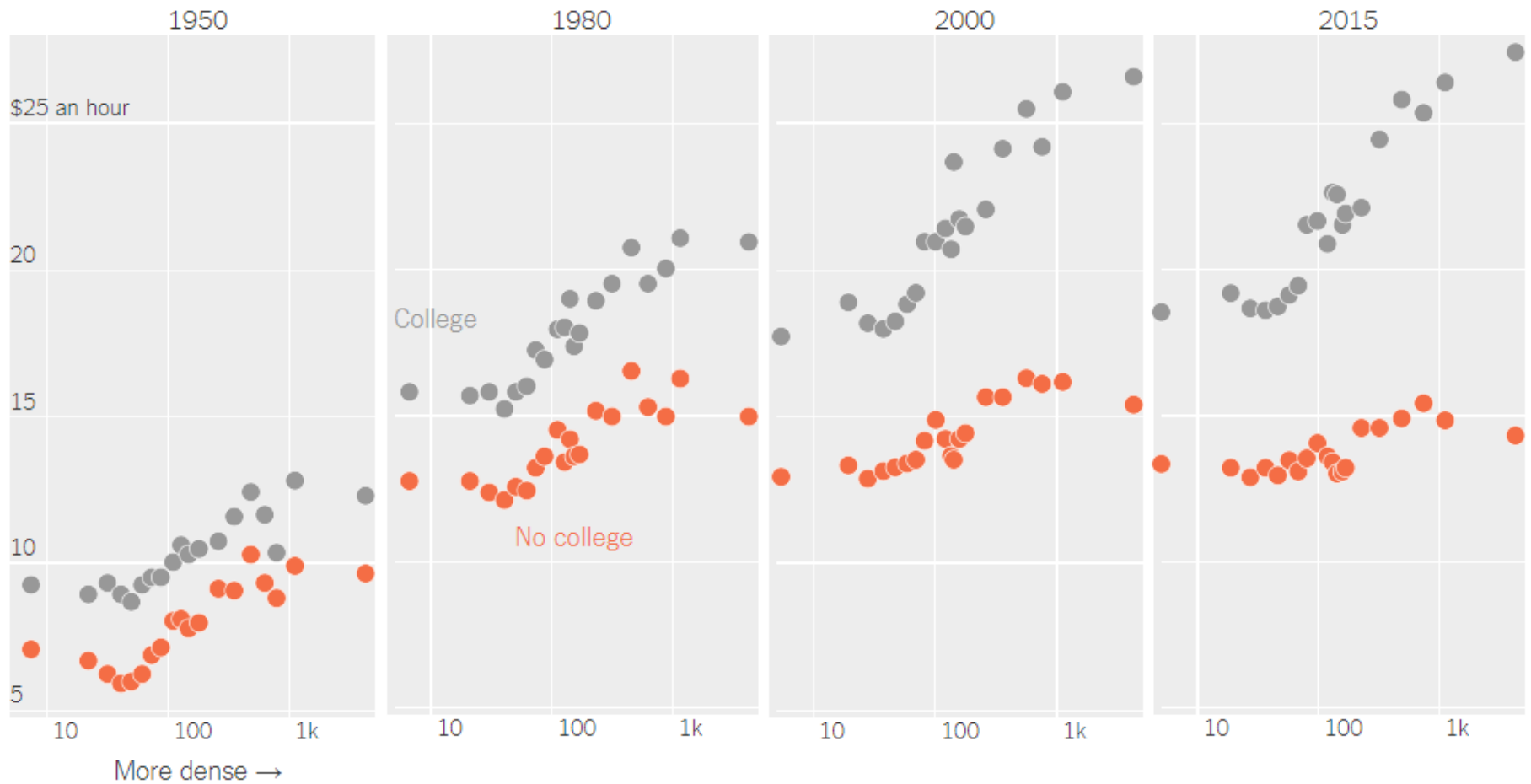
Source: Georgetown University Center on Education and the Workforce analysis of *Current Population Survey* (CPS) data, 2007-2016. From [America's Divided Recovery: College Haves and Have-Not's](#), 2016.

Note: Employment includes all workers age 18 and older. The monthly employment numbers are seasonally adjusted using the U.S. Census Bureau X-12 procedure and smoothed using a four-month moving average.

# GEOGRAPHIC DISPARITY

Even major metros don't solve disparity; they aggravate it.

*The Economic Advantages of Dense Cities Are Disappearing for Low-Skilled Workers*



Source: Badger, Emily and Quoc Trung Bui. "What if Cities Are No Longer the Land of Opportunity for Low-Skilled Workers?" *New York Times*. Jan. 11, 2019  
Note: Wages are adjusted for inflation and averaged by commuting zone. Density is defined as residents per square mile and is from 1950. College is defined as some college or more. No college is high school or less.



“Technology is automating some tasks,  
but most jobs are not disappearing.  
They are evolving.”

–Vanguard Research: Megatrends, “The future of work”





When we use “talent” as a synonym for workforce, we are really saying that we want specific skills, higher education, and proven commitment.



# THE CRISIS IN OUR PROFESSION

The draw of major metros is undermining both our rural communities ***and*** our mid-size cities.

Major metros increasingly struggle with disparity in wages, social equity, and rising housing costs.

Let's talk...