

# Rain, Rushing Water, and Recovery

## Lessons from Ellicott City, Maryland



HOWARD COUNTY  
**ECONOMIC  
DEVELOPMENT  
AUTHORITY**

*Grow. Here's how.*

Lawrence F. Twele, CEcD  
CEO



**ELLICOTT CITY**

**Baltimore**

**Washington D.C.**





©Losurdo Photography



J. MELVIN  
PREMIER PROPERTIES  
Redefining REAL ESTATE  
in Howard County  
410-988-5714  
Est. 2008

Salon Marielle  
WWW.SALONMARIELLE.COM  
ORGANIC  
VEGAN  
OWAY  
AMMONIA  
FREE  
COLOR

Salon Marielle  
WWW.SALONMARIELLE.COM

ATTIC ANTIQUES  
'N' THINGS  
BUY AND SELL  
ESTATE LIQUIDATORS

8 2 3 9





BOYDS BEARS CHERISHED EDDIES  
PRECIOUS MOMENTS SNOWBABIES  
CHARMING TAILS SERAHIM ANGEL

*Precious Gifts*

FOR LEASE  
RETAIL SPACE  
K. Bernstein  
410.363.3444  
DAVID S. BROOK

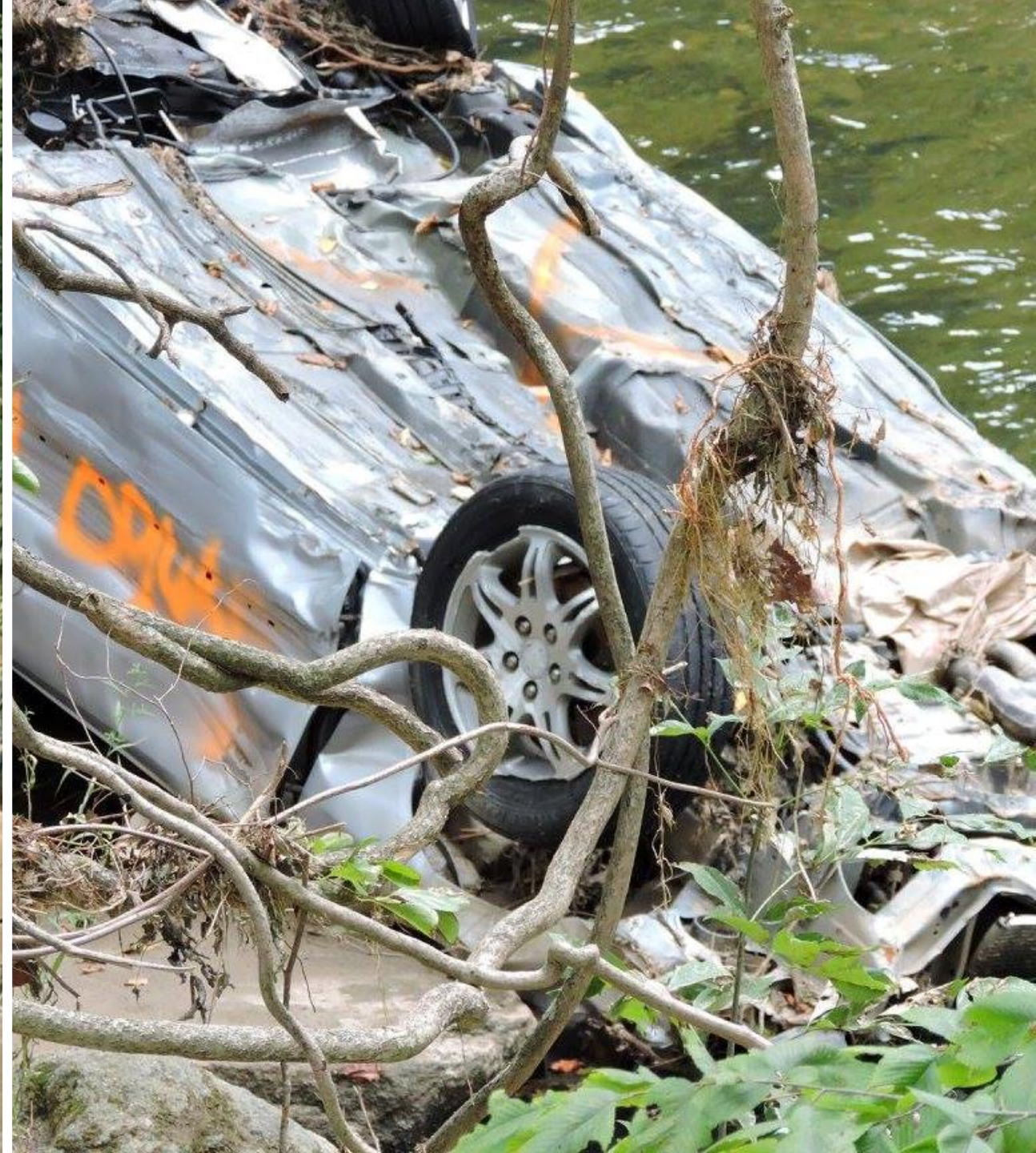












# Economic Impact

- 141 businesses impacted
- 955 jobs displaced
- \$53 million lost labor income
- \$196 million business activity gone
- \$6.2 million decrease in government revenues

# It begins with a plan...



- 
- 1. Response**
  - 2. Recover**
  - 3. Rebuild**



**Response:  
Immediate incident  
management**











**Recover:  
Infrastructure repair**



# Recover: Infrastructure repair

# Rebuild: Open for business






**Rebuild:  
Open for business**



# Rebuild: Open for business



# Rebuild: Long-Term



## Rebuilding Ellicott City: Working together on a path to rECovery



**Help us envision the future of Historic Ellicott City!  
We need your input! We want your suggestions!**

How can we make Old EC stronger, more resilient and more dynamic for both residents and visitors?  
What kinds of businesses, amenities and improvements would you like to see?

**Join County Executive Allan H. Kittleman  
and experts from Frederick and Annapolis  
to explore how we can successfully rebuild our historic town.**

**Thursday, December 1, 7 to 9 p.m.**  
Roger Carter Community Center,  
3000 Milltowne Drive, Ellicott City  
Hear from a City of Frederick expert  
about rebuilding and economic development.

**Saturday, December 10, 9:30 to 11:30 a.m.**  
Roger Carter Community Center,  
3000 Milltowne Drive, Ellicott City  
Hear from a City of Annapolis expert  
about rebuilding and historic preservation.



- For more information, visit [ecstrong.org](http://ecstrong.org) or contact Karitsa Norman, 410-313-2350 or [knorman@howardcountymd.gov](mailto:knorman@howardcountymd.gov)
- For an interpreter (seven days in advance of the meeting) contact Department of Community Resources and Services 410-313-6400 or Relay 7-1-1



# Rebuild: Long-Term

- Re-thinking Retail
- Infrastructure improvements
- Storm water mitigation

## 22 months after the 2016 flood...

- 72% of displaced residents returned
- 96% of businesses have returned
- 4% of businesses are not returning
- 19 new businesses have opened



Then it happened again,  
May 25, 2018.

# Where are we now?

- Public safety is main focus
- Infrastructure mitigation
  - Upstream: storm water management
  - Downstream: considering drastic changes to city plan

# Lessons Learned

- Know your emergency operations director – now – before disaster strikes
- Be a part of the emergency operations plan
- Decisions are made in the emergency operations center – make sure you're there

# Lessons Learned

- Hazard planning is a value-added tool for attraction and retention
- Creativity and flexibility are key



Thank you

Lawrence F. Twele, CEcD  
CEO



HOWARD COUNTY  
**ECONOMIC  
DEVELOPMENT  
AUTHORITY**

*Grow. Here's how.*



A control room or operations center with multiple computer workstations and large display screens. The room is dimly lit with a blue tint. The workstations are arranged in rows, each with a monitor, keyboard, and mouse. The large screens on the wall display various data, including maps and charts. The text "EXTRA SLIDES" is overlaid in the center of the image.

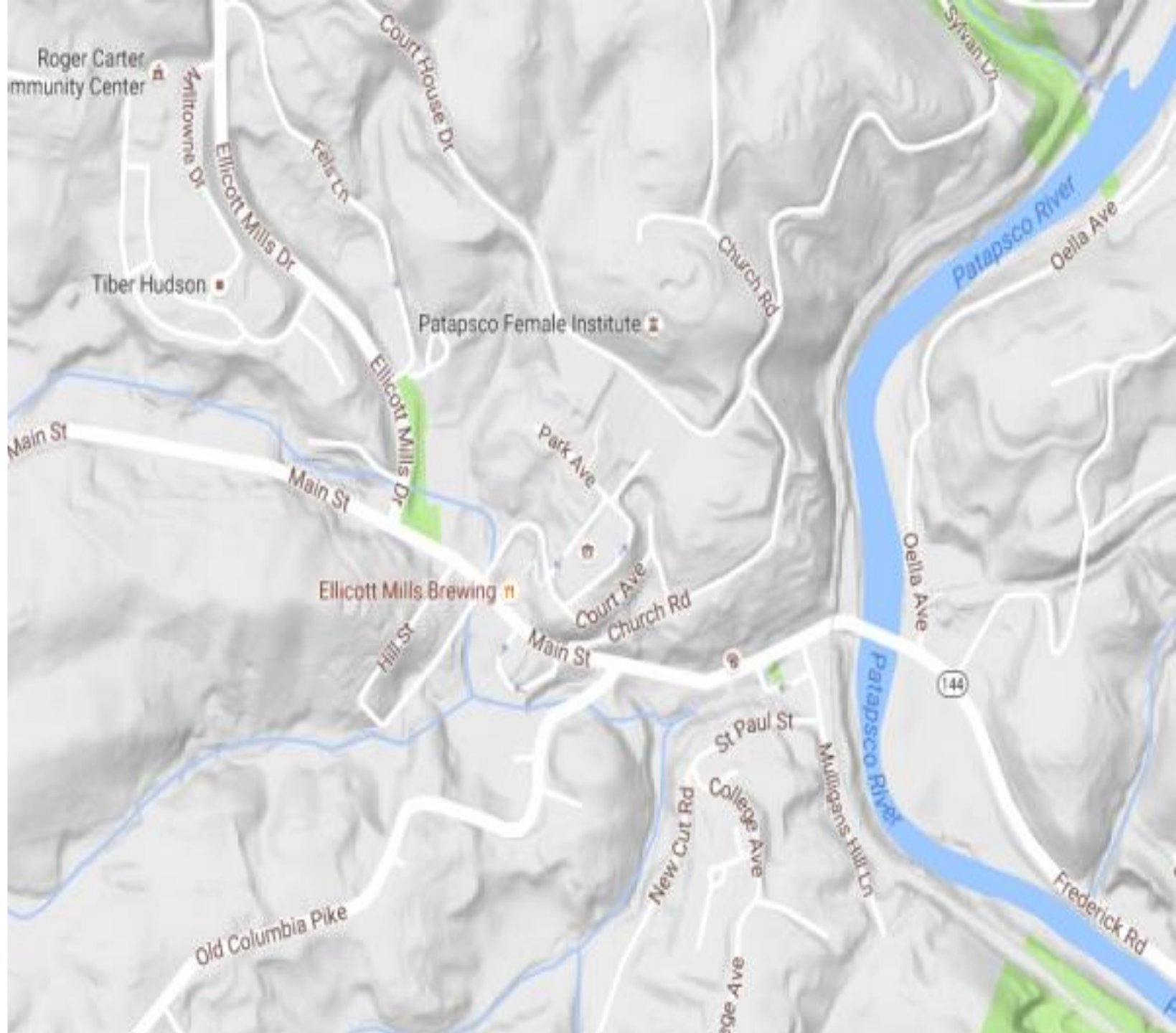
EXTRA SLIDES



**During  
Construction**



# The Impact





Before the Storm





2016-07-30 19:08:15

Cam 02

6 Minutes Later





2016-07-30 19:12:46



Cam 02

Four Minutes Later





HOWARD COUNTY  
**ECONOMIC  
DEVELOPMENT  
AUTHORITY**  
*Grow. Here's how.*

# Ellicott City

## Main Street

# History of Major Flooding Events



HOWARD COUNTY  
ECONOMIC  
DEVELOPMENT  
AUTHORITY  
*Grow. Here's how.*

1858

1868 (Great Flood)

1901

1917

1923

1942

1952 (Tiber Flood)

1972

1975

2011

2016

# History of Major Flooding Events

1868

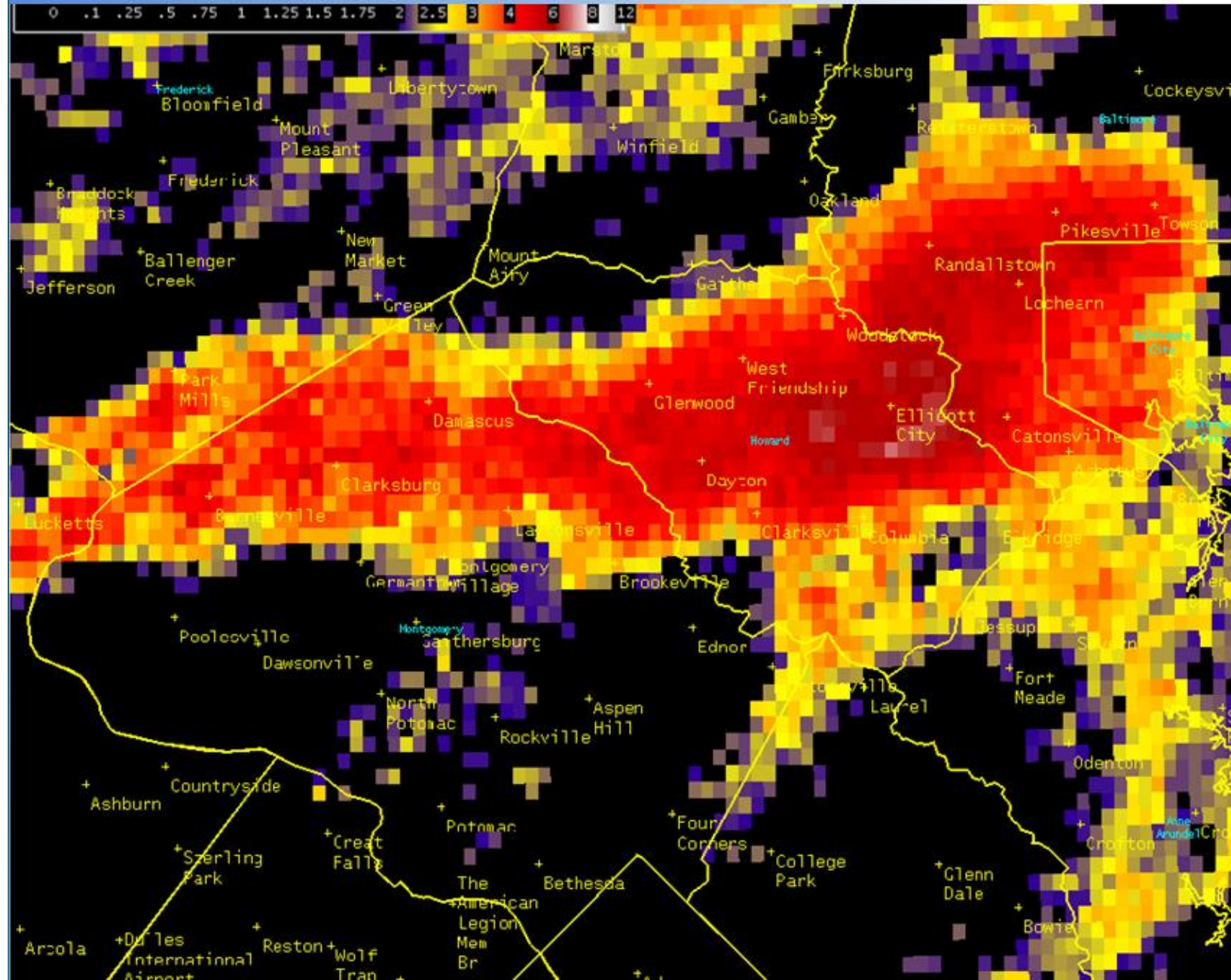


1952



# The Impact

## Precipitation Estimates – July 30, 2016





## About Howard County

- Population ~315,000
- 60% of residents have Bachelors degrees
- 7 cities in Howard County named "Best Place to Raise a Family!"
- 3<sup>rd</sup> wealthiest county in U.S. and 1<sup>st</sup> in Maryland
  - (median household income)

# About Ellicott City

A faint map of the Ellicott City and Baltimore area is visible in the background. The map shows the location of Ellicott City relative to Baltimore, with a red dot marking Ellicott City. The text 'ELLICOTT CITY' and 'Baltimore' are overlaid on the map.

- Founded in 1772 as a mill town
- Home to oldest remaining passenger train station
- Main Street is part of Historic National Road west
- Historic district home to 140 businesses and 250 residents
- Babe Ruth was married here!