



Newhall Revitalization Program

Hamden Economic Development Corporation

A Neighborhood Built on a
Landfill in Hamden CT. is
Revitalized

1850s-2016

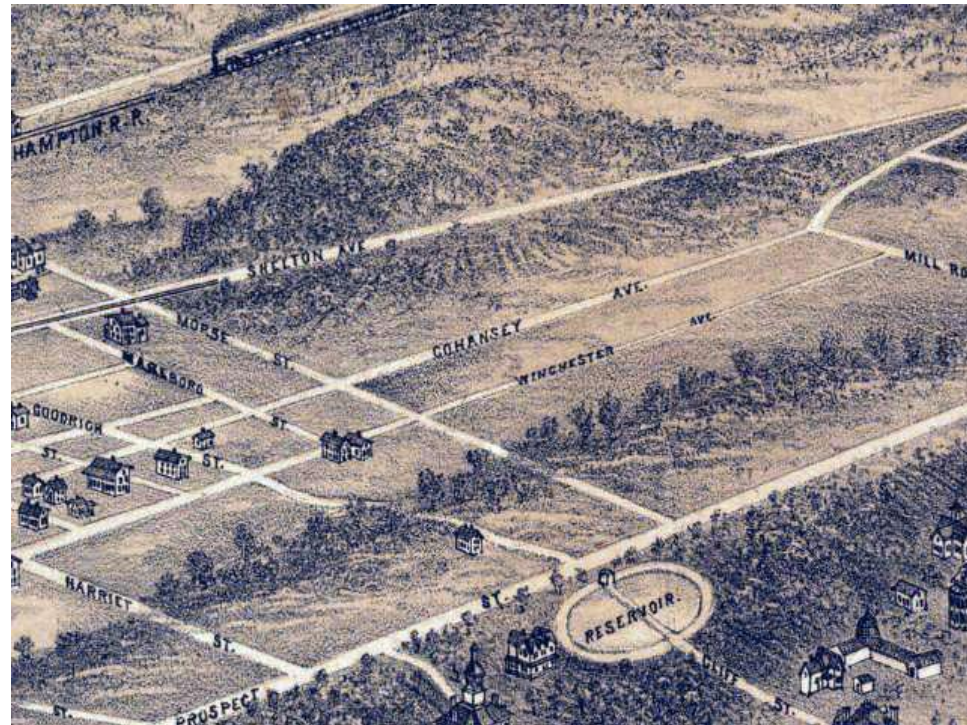


The Timeline

- 1850s-1920s
- 1920-1950s
- 1950s-2000
- 2000-2010
- 2010 to NOW



1850s From Farms and Wetlands to Industrial Use in the Gilded Age





Guns and Housing

US Repeating Arms Circa 1917





Malaria in the 1920s: BZZZZZ

Beginning of a Landfill



Community Center and Parks



Rochford Field 1939



Newhall Community Center 1917



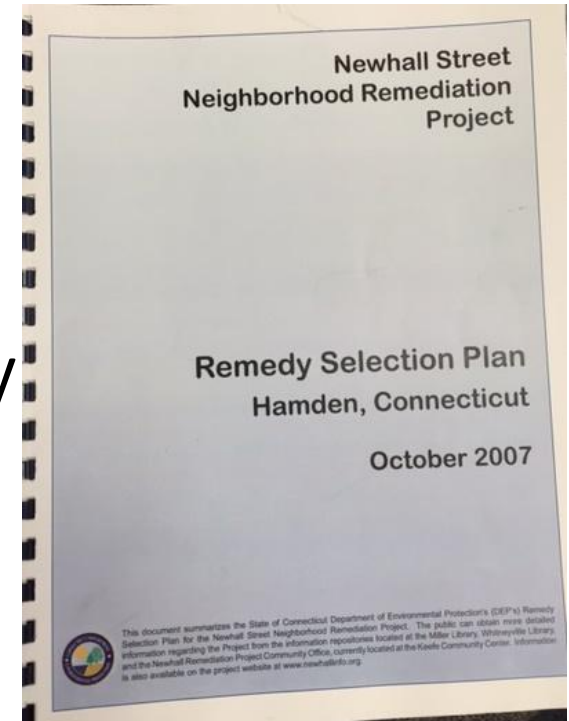
2000 Michael J Whalen Middle School Built 1954-56



Consent Order and Remedy Plan



- State of CT
- Town of Hamden
- Regional Water Authority
- Olin Corporation



Protests and Discontent



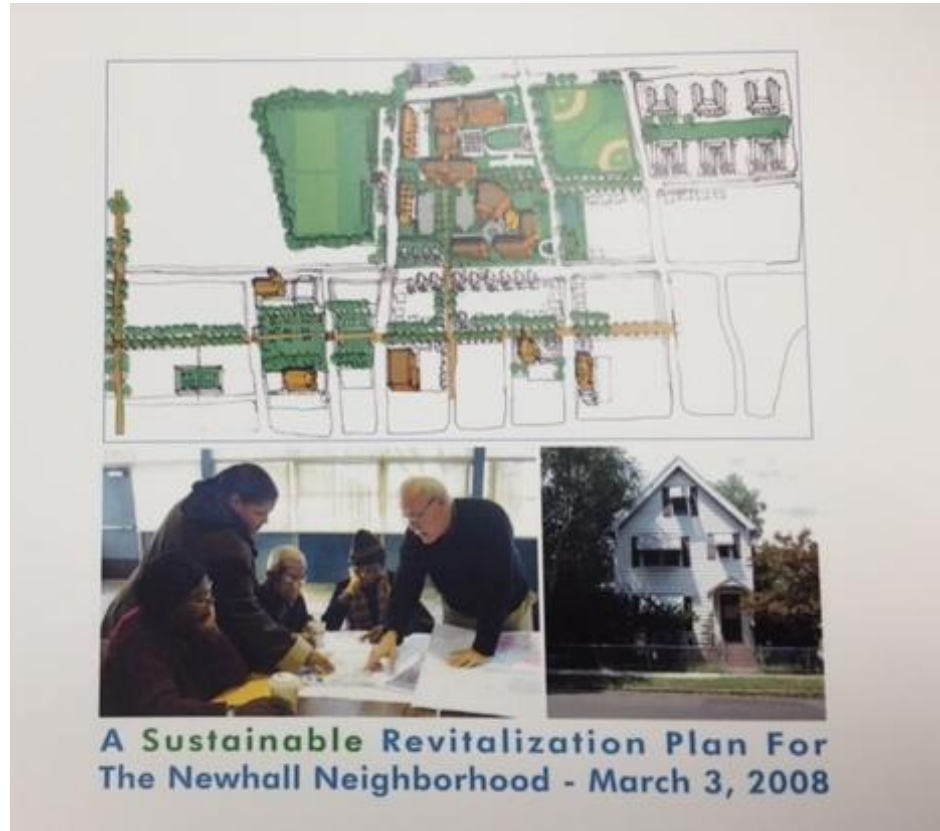


Structurally Damaged Homes





Community Based Planning





The Work Begins





Results: Residential Soil Cleanup 2010-2012

- 234 Properties, waste fill removed, new sidewalks, driveways, lawns, fences, trees, dog houses, decks.
- Total Investment of \$65,000,000



Residential Structural Improvement Program 2012-2015

- 102 Homes Assisted
- 15 Homes Acquired and residents relocated
- 12 Blighted Homes Demolished
- Total Investment: \$5,000,000



Rochford Field and Villano Park Completed 2014-2015





Unplanned Outcomes Deconstruction Program

- Deconstruction of 10 homes, Job Training, Workforce Grant, Community College Course for 8 Unemployed People, Paid Livable Wage and Training. Reduced Impact on Landfill.





Unplanned Outcome: Zero Energy House





Hamden Business Incubator
Funding (\$10M) from EDA, State of CT,
Historic Tax Credits
Under Construction
Completion Date Fall of 2017
Home to 20 Businesses



Back Entrance - Hamden Business Incubator



Former Middle School Spring Rose Gardens 87 mixed Income housing Units and Community Center





Total Investment

Residential Soil Cleanup: \$65M

Parks Remediation and Restoration: \$12M

Structural Repair Program: \$5M

Business Incubator: \$10M

Hamden Middle School Redevelopment: \$18M

Zero Energy: \$450K

Deconstruction Program: \$50,000

Soil Management Fund (New): \$2M

Total Investment: \$112,500,000