


# SOUTH FLORIDA MARINE RESEARCH HUB

FLORIDA HAS THE  
**WORLD'S  
THIRD LARGEST**  
CORAL BARRIER REEF SYSTEM

SOUTH FLORIDA  
REEFS PROVIDE OVER  
**\$6 BILLION**  
IN ECONOMIC IMPACT PER YEAR  
**71,000 JOBS**

4 MAJOR UNIVERSITIES,  
**HUNDREDS**  
OF RESEARCH PROJECTS  
ON REEF RESTORATION,  
BIOMEDICINE, FISHERIES & ECOSYSTEMS

**\$13  
BILLION**  
INVESTED  
IN AQUACULTURE WATER  
SYSTEMS GLOBALLY BY 2030

THE OCEANS  
CONTAIN  
MORE THAN   
OF THE EARTH'S  
**96% WATER**  
95% IS UNEXPLORED

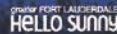
 SOUTH FLORIDA  
MARINE  
INDUSTRY PROVIDES  
**\$11.5 BILLION**  
IN ECONOMIC IMPACT  
**136,000 JOBS**

**8 MAJOR INDUSTRIES**  
WILL BENEFIT FROM A  
MARINE RESEARCH HUB\*

MANY PRIVATE YACHTS HAVE  
**OCEANOGRAPHIC  
RESEARCH  
CAPABILITY**

BY 2050 THE EARTH'S  
**POPULATION WILL DOUBLE**  
GREATLY INCREASING THE NEED FOR FOOD, ENERGY & CLEAN WATER

\*Biomedicine, Biotechnology, Energy, Marine Engineering, Defense, Aquaculture, Marine Recreation, Environmental



[gfalliance.org](http://gfalliance.org) | [sunny.org](http://sunny.org) | [miaef.org](http://miaef.org) | [starmark.com](http://starmark.com)







# THE CORAL REEF PAVILION

PRESENTS  
THE MARINE RESEARCH HUB  
Visit Pavilion SC Booth 5

## Navigating Towards Sustainable Waterways

The *Coral Reef Pavilion* sponsors below are partnering with local universities to make up the Marine Research Hub, a groundbreaking collective of scientists focusing on our Florida Reef, other coral reefs and much more. The Florida Reef provides food and shelter to a variety of sea life, is a critical part of the marine ecosystem, and it is vital to our tourism and recreational boating industry.



[gflalliance.org](http://gflalliance.org) | [sunny.org](http://sunny.org) | [miasf.org](http://miasf.org) | [starmark.com](http://starmark.com)

# OUR OCEAN MEANS THE WORLD TO US

This is the Venice of America, home to 300 miles of navigable waterways and canals as well as our corner of the Atlantic Ocean. That makes the Fort Lauderdale International Boat Show, **THE #1 BOAT SHOW ON THE PLANET**, the perfect time-perfect place to foster preservation, research and education.

While you're visiting Greater Fort Lauderdale, we invite you to stop by to relax, refresh and learn with us at *The Coral Reef Pavilion* at SC Booth 5.

*"Sustaining the reefs and ecosystems that keep our waters and beaches pristine supports our thriving tourism economy."*

**Stacy Ritter, President - Greater Fort Lauderdale Convention & Visitors Bureau**

*"In addition to recreational marine industries, energy, aquaculture, biomedicine and many other industries benefit from marine research, adding jobs and bolstering our economy."*

**Bob Swindell, President & CEO - Greater Fort Lauderdale Alliance**

*"As environmental stewards, the marine industry relies on research that explores exciting underwater possibilities that protect and promote healthy oceans and abundant marine life."*

**Phil Purcell, Executive Director - Marine Industries Association of South Florida**

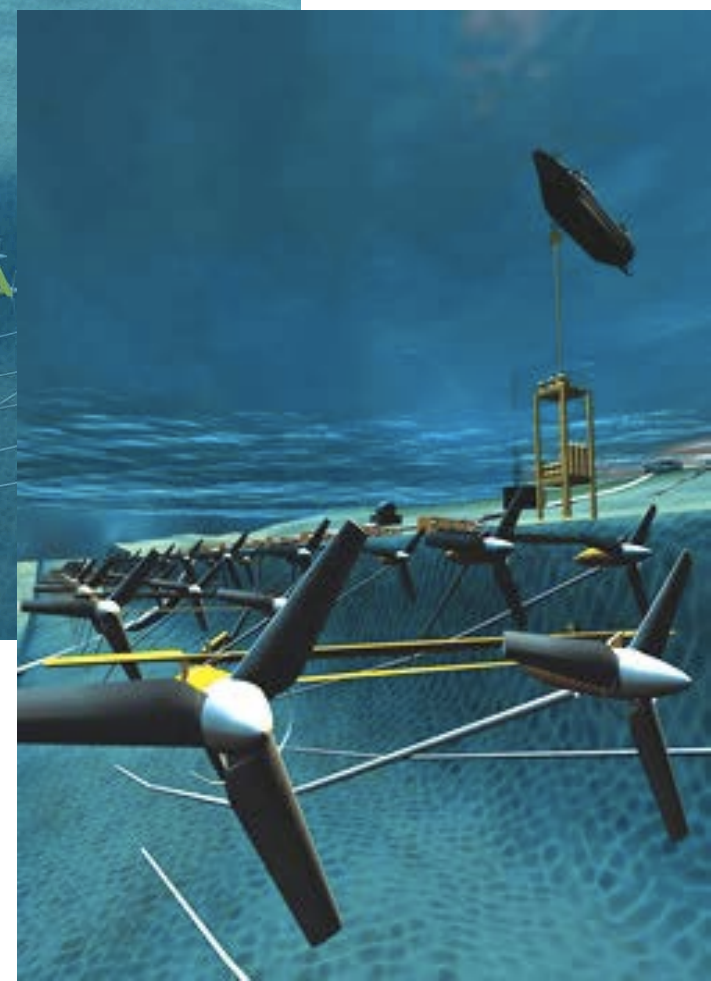
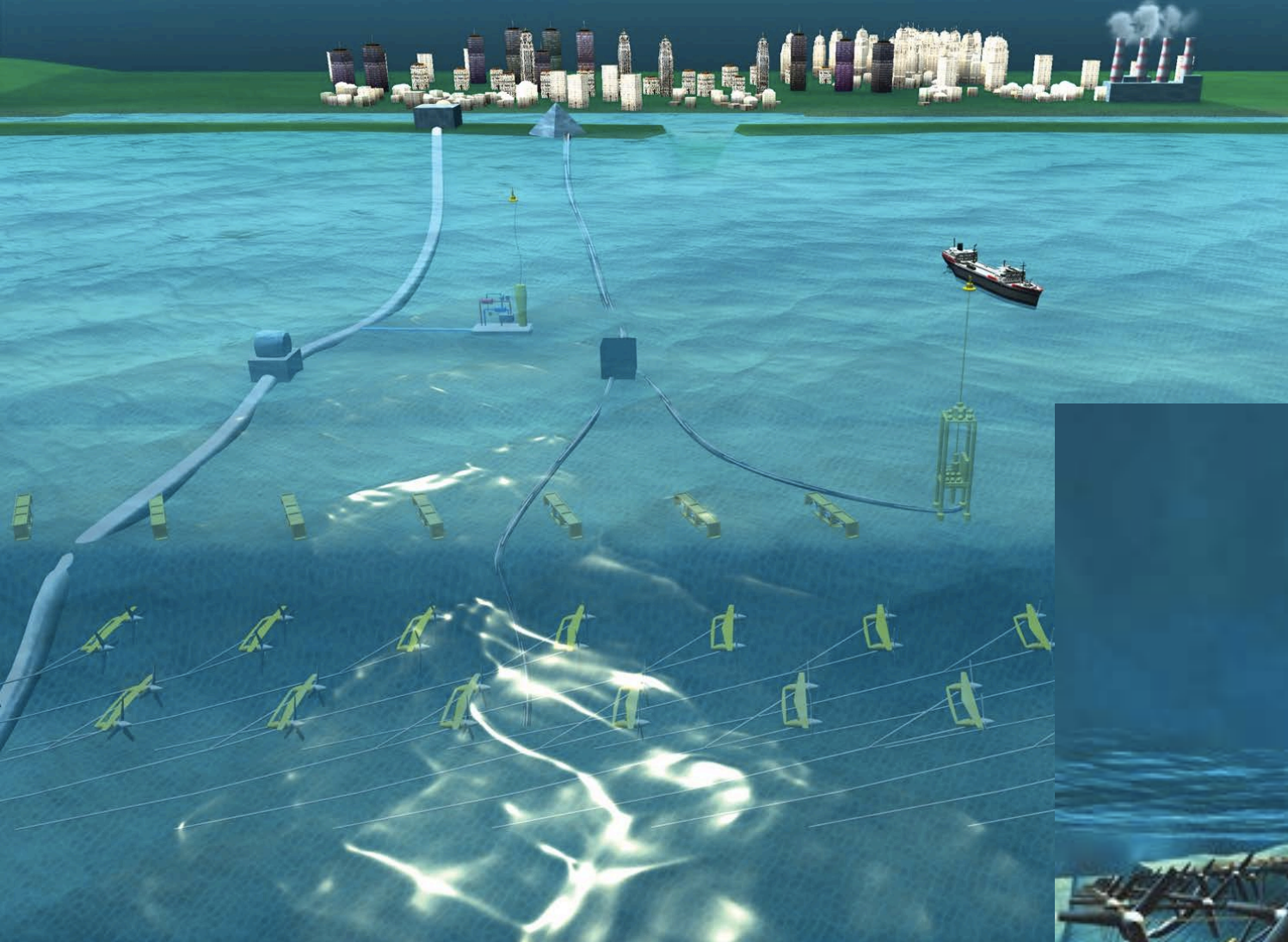
*"Marine research supports the earthly reason for water sports, fishing and boating that all of us who live here can enjoy everyday."*

**Peggy Nordeen, CEO - Starmark**





Visit  
[bit.ly/FLIBS16](http://bit.ly/FLIBS16)  
to watch video!



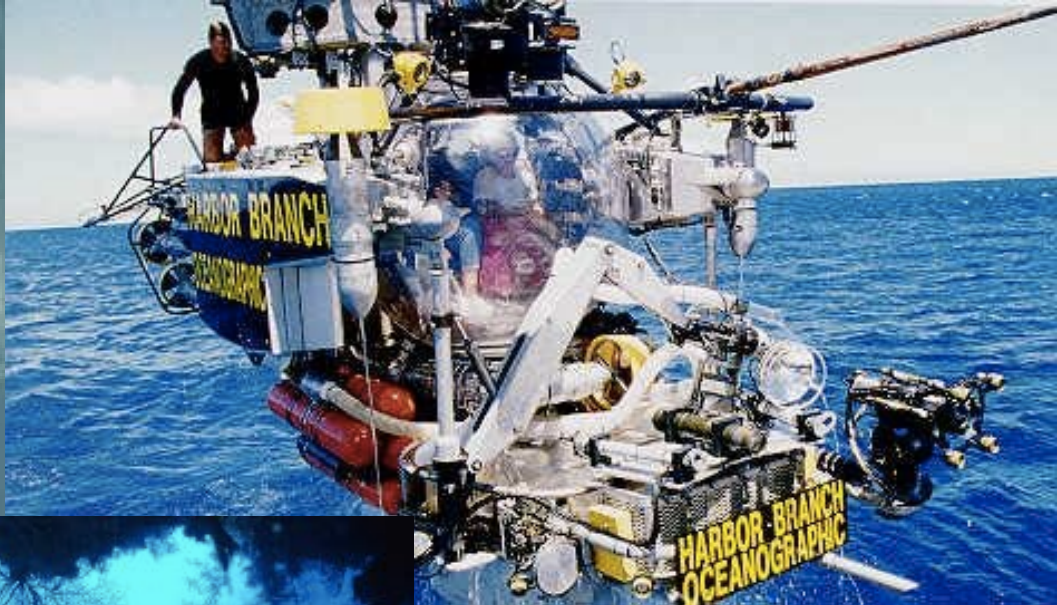


**FAU**  
FLORIDA ATLANTIC  
UNIVERSITY

# Unmanned Maritime Systems (PB13 and beyond)

	Mine Counter-Measures (MCM)	Maritime Security
<b>Unmanned Surface Vehicles (USV)</b>	<p>Mine Countermeasure (MCM) USV</p> 	<ul style="list-style-type: none"> <li>• ISR</li> <li>• Port Surveillance</li> <li>• Special Operations Forces (SOF) Support</li> <li>• Electronic Warfare</li> </ul> <p>SeaFox</p> <p>Mk I      Mk II</p>  <p>Modular Unmanned Surface Craft - Littoral (MUSCL) Use Operational Evaluation Sys</p> 
<b>Unmanned Undersea Vehicles (UUV)</b>	<p>Remote Mine-hunting System (RIMS) AN/WLD-1</p>  <p>Surface Mine Countermeasure (SMCM) User Operational Evaluation Sys Increment 1</p>  <p>Battlespace Preparation Autonomous Undersea Vehicle (BPAUV)</p>  <p>MK 18 Mod 1 Swordfish UUV Sys</p>  <p>MK 18 Mod 2 Kingfish UUV Sys</p>  <p>Surface Mine Countermeasure (SMCM) UUV</p> 	<p>Large Displacement Unmanned Underwater Vehicle (LDUUV)</p>  <p>Semi-Autonomous Hydrographic Recon Vehicle</p>  <p>Sea Stalker</p>  <p>Sea Maverick</p>  <p>Hull Underwater Vehicle / Hull Underwater Localization Sys (HULS)</p>  <p>ECHO Ranger</p>  <p>Littoral Battlespace Sensing AUV / Littoral Battlespace Sensing Glider</p> 





**FAU**<sup>TM</sup>

FLORIDA ATLANTIC  
UNIVERSITY

**HARBOR  
BRANCH**

FLORIDA ATLANTIC UNIVERSITY®

*Ocean Science for a Better World®*



Nuclear Magnetic Resonance machine used in lab to see the different parts of the venom.

FAU™

FLORIDA ATLANTIC  
UNIVERSITY

















NOVA SOUTHEASTERN  
UNIVERSITY

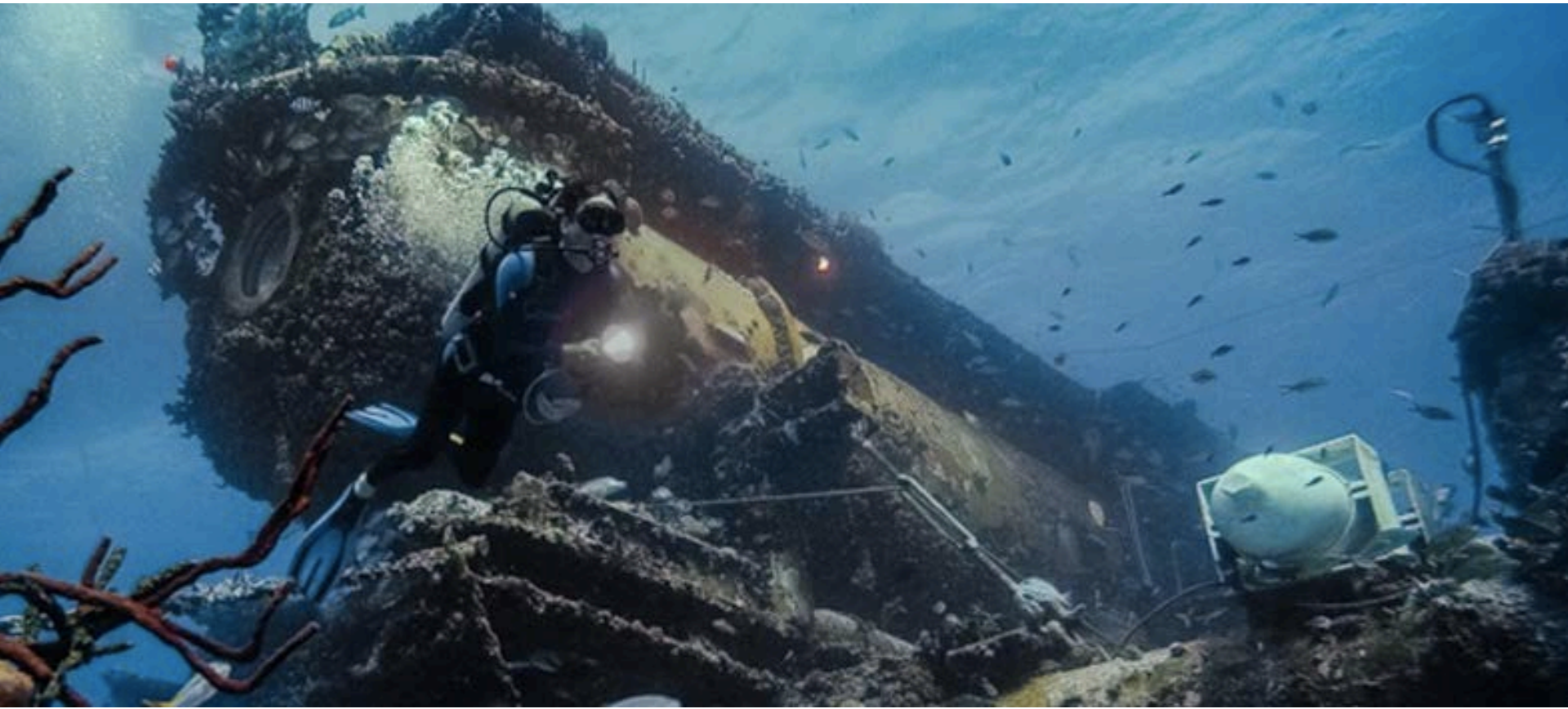


NOVA SOUTHEASTERN  
UNIVERSITY



GUY HARVEY RESEARCH INSTITUTE  
NOVA SOUTHEASTERN UNIVERSITY





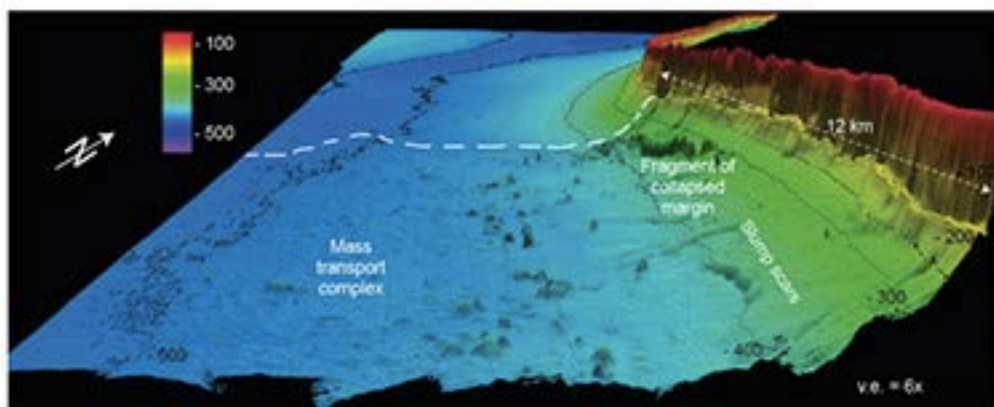
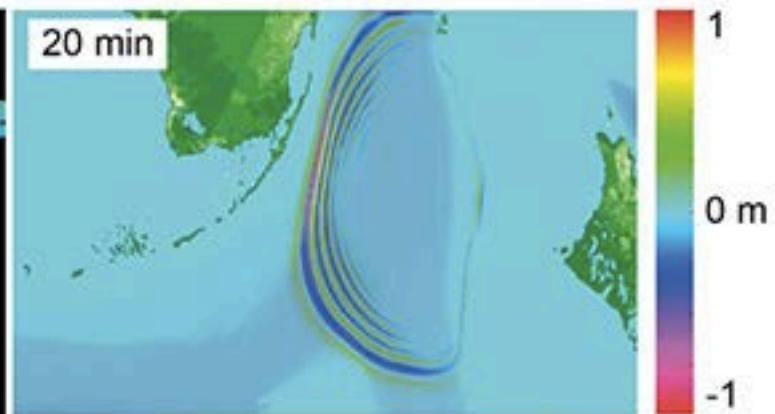
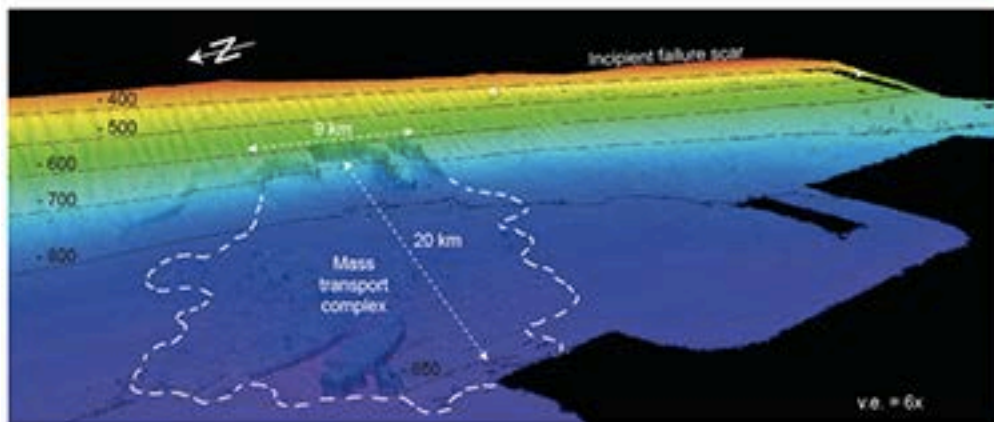
**FIU**

FLORIDA  
INTERNATIONAL  
UNIVERSITY









UNIVERSITY OF MIAMI  
**ROSENSTIEL**  
**SCHOOL of MARINE &**  
**ATMOSPHERIC SCIENCE**

